

SLIDEOUT AWNINGS

TITLE	SECTION PAGE
COLOR CODE CHART - STANDARD COLORS	2
ASCENT	4
SPECIFICATIONS.....	4
MOUNTING METHODS.....	5
ASCENT ORDER FORM	6
ASCENT PART NUMBER CONFIGURATION	7
ASCENT ILLUSTRATED PARTS LIST	8
SLIDEOUT COVER	10
SPECIFICATIONS.....	10
SLIDEOUT COVER ORDER FORM.....	11
SLIDEOUT COVER ROLLER TUBE PART NUMBER CONFIGURATION	12
SLIDEOUT COVER ILLUSTRATED PARTS LIST	13
SOK III.....	14
SOKIII ORDER FORM	15
SOK III PART NUMBER CONFIGURATION	16
SOKIII ILLUSTRATED PARTS LIST	17
DISCONTINUED PRODUCTS.....	18

SLIDEOUT AWNINGS

COLOR CODE CHART - STANDARD COLORS

VINYL OPTIONS

COLOR KEY 1

DENIM STRIPE					
PATIO →	52 Sierra Brown	55 Bordeaux	57 Teal	58 Black/Gray	79 Ocean Blue
Weatherguard	00 White / 52 Brown	00 White / 55 Bordeaux	00 White / 57 Teal	00 White / 58 Black	00 White / 79 Blue
COMPANION →	9D Sierra Brown	9E Bordeaux	9F Teal	9G Black	9C Ocean Blue
Weatherguard	00 White / 9D Brown	00 White / 9E Bordeaux	00 White / 9F Teal	00 White / 9G Black	00 White / 9C Blue
DUNE STRIPE					
PATIO →	8A Sierra Brown	8B Bordeaux	8C Teal	8D Black/Gray	8E Ocean Blue
Weatherguard	00 White / 8A Brown	00 White / 8B Bordeaux	00 White / 8C Teal	00 White / 8D Black	00 White / 8E Blue
COMPANION →	8A Sierra Brown	8B Bordeaux	8C Teal	8D Black/Gray	8E Ocean Blue
Weatherguard	00 White / 8A Brown	00 White / 8B Bordeaux	00 White / 8C Teal	00 White / 8D Black	00 White / 8E Blue
FADES					
PATIO →	LF Burgundy	LH Camel	LJ Blue Slate	LK Silver	LM Black
Weatherguard	00 White	00 White	00 White	00 White	00 White
SHALE FADES					
PATIO →	6A Burgundy	6B Camel	6C Blue	6D Silver	6E Black
Weatherguard	00 White	00 White	00 White	00 White	00 White
COMPANION →	6A Burgundy	6B Camel	6C Blue	6D Silver	6E Black
Weatherguard	00 White	00 White	00 White	00 White	00 White
PREMIUM RT					
PATIO →	7A Charcoal	7B Chocolate	7C Indigo		
Weatherguard	00 White / 7A Charcoal	00 White / 7B Chocolate	00 White / 7C Indigo		
COMPANION →	7A Charcoal	7B Chocolate	7C Indigo		
Weatherguard	00 White / 7A Charcoal	00 White / 7B Chocolate	00 White / 7C Indigo		
	CHECKERED	SOLID PRINT VINYL			
PATIO →	9A Checkered	00 Solid White	9G Solid Black		
Weatherguard	00 White	00 White	00 White / 9G Black		
COMPANION →	9A Checkered	00 Solid White	03 Solid Gray	62 Solid Black	
Weatherguard	00 White				

SOLID ACRYLIC FABRICS

COLOR KEY 2

10 Cadet Gray	38 Captain Navy	EA Linen Tweed	TU Beige	UY Green
<i>For custom acrylic colors, go to www.carefreeofcolorado.com or www.e-carefree.com. Please note: Custom acrylic colors are offered in solid or horizontal stripes.</i>				

FULLVIEW FABRICS

COLOR KEY 3

04 Black	82 Sierra Brown	85 Bordeaux	87 Ocean Blue	
----------	-----------------	-------------	---------------	--

POLYWEAVE FABRICS

COLOR KEY 4

RA Charcoal	RF Taupe	RG Black	
<i>Polyweave available for select OEM installations and replacement canopies only. Limited colors available while supplies last. Polyweave canopies are made with matching Polyweave Weatherguard.</i>			

ALUMAGUARD/UNIGUARD COLORS

COLOR KEY 5

25 Polar White	JV Black	23 Satin	
----------------	----------	----------	--

SUNBLOCKER/SIDEBLOCKER

COLOR KEY 6

82 Sierra Brown	84 Navy	85 Bordeaux	88 Black	
-----------------	---------	-------------	----------	--

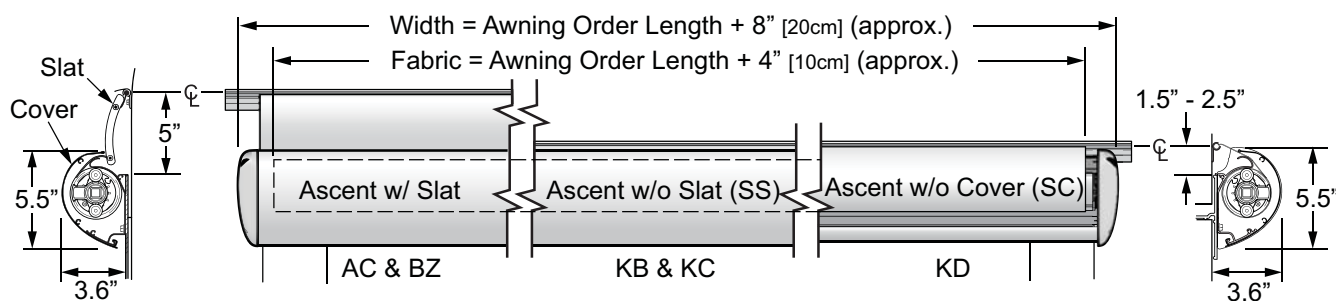
SLIDEOUT AWNINGS

ASCENT

- Stylized to blend smoothly with the coach wall;
- Simplified installation, integrated deflector and mounting plate mounts directly to room and aligns with the top of the room flange;
- Improved pitch provides for rain run off;
- Hinged cover provides easy access for cleaning and service while providing a closed, finished appearance;
- Available in standard and XL versions.



SPECIFICATIONS



*Dimensions are given for reference only and may vary based on the slide-out configuration and installation specifics.
For detailed installation information, refer to the product manuals available on-line at www.carefreeofcolorado.com*

as029b

Notes: The slat option (AC and BZ) is offered for select OEM installations and not available for aftermarket installations.

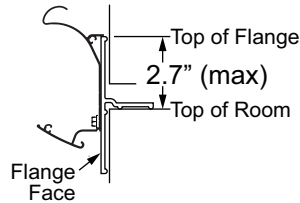
The deflector only option (KD) is not available for XL models (box lengths 198" and greater; flange to flange lengths 203" and longer).

AVAILABLE LENGTHS: (measured box length)		Standard	46" [107cm] - 196" [498cm]	EXTENSION: 42" [107cm]
		XL	198" [503cm] - 384" [975cm]	
Fabric Tension:		One spring for standard widths; two springs for XL models		
Color:	<i>Hardware:</i>	White, Black		
	<i>Fabric:</i>	Woven Acrylic or Vinyl (refer to sales literature for colors available)		
Weight:	<i>Standard</i>	Base Weight @	46" [107cm] Box Length =	22.2 lbs [10.1kg]
	<i>XL</i>	Base Weight @	197" [500cm] Box Length =	75.2 lbs [34.2kg]
	for every 12" [30.5cm] increase in length, add 3.6 lbs [1.6kg]			
<i>Weight calculation is approximate. Actual weight may vary based on fabric type and specific installation details</i>				

MOUNTING METHODS

DIRECT MOUNT

The direct mount method is for non-recessed rooms with flat flanges.



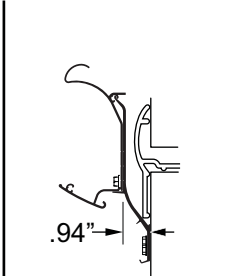
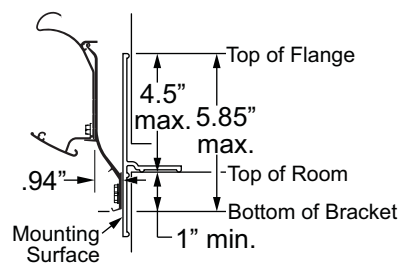
as036a

1. Is the outside face of the flange flat? ☐ YES ☐ NO
2. Does the flange overlap the vehicle wall? (Flange is not flush or recessed). ☐ YES ☐ NO
3. Is the height of the flange from the top of the room 2.7" or less? ☐ YES ☐ NO

If the answer to all questions is yes, the Ascent may be mounted directly to the room. Use the bracket mount if any answer is no.

BRACKET MOUNT

The bracket mount method is for taller flanges or flanges that are curved or contoured or it is necessary to raise the chassis to clear awnings mounted on the slideout.



Sample Application
w/ Curved Flange

as036b

1. Is the height of the flange from the top of the room to the top of the flange 2.7" - 4.5"? ☐ YES ☐ NO
2. Is the maximum flange thickness .9" or less? ☐ YES ☐ NO
3. Can the bottom of the bracket be positioned to meet the minimum/maximum dimensions. ☐ YES ☐ NO

If the answer to all questions is yes, the Ascent may be mounted with brackets.

WARRANTY

The Ascent slideout cover is covered by the standard Carefree of Colorado 1 year Limited Warranty.

ON-LINE AT WWW.CAREFREEOFCOLORADO.COM

◆ Product Manuals ◆ Fabric Options ◆ Warranty Information

SLIDEOUT AWNINGS

ASCENT ORDER FORM

STEP 1: ROOM SIZE

Box Room Length: _____ OR Flange to Flange Length: _____ *If measurement ends in a fraction, round down to the nearest inch*

Flange Height _____ (MEASURED FROM TOP OF ROOM TO TOP OF FLANGE)

STEP 2: AWNING STYLE

- ☐ DEFLECTOR ONLY **NOTE:** The deflector only option is NOT available for the XL model (box lengths 198" and longer; flange to flange lengths 203" and longer). All XL models come with cover.
- ☐ WITH COVER

STEP 3: COMPONENTS

- ☐ MOUNTING BRACKETS (REQUIRED IF FLANGE HEIGHT IS 2.7" - 4.5" OR FOR CURVED FLANGE APPLICATIONS)
- Bracket Kits based on order length: 2 BRACKETS (awning order length 112" or less)
- ☐ KY5551 WHITE ☐ KY5561 BLACK
- 3 BRACKETS (awning order length 118" – 196")
- ☐ KY5552 WHITE ☐ KY5562 BLACK
- 5 BRACKETS (XL awning order length 202" & larger)
- ☐ KY5553 WHITE ☐ KY5563 BLACK

STEP 4: HARDWARE COLOR

- ☐ WHITE ☐ BLACK

STEP 5: SELECT CANOPY FABRIC AND COLOR

<input type="checkbox"/> VINYL OPTIONS - COMPANION (COLOR KEY 1)	<input type="checkbox"/> ACRYLIC (COLOR KEY 2) <input type="checkbox"/> CUSTOM ACRYLIC	<input type="checkbox"/> POLYWEAVE (COLOR KEY 4)
<u>Color Code</u> _____ <u>Name</u> _____	<u>Color Code</u> _____ <u>Name</u> _____	<u>Color Code</u> _____ <u>Name</u> _____

REFER TO THE COLOR CHART FOR STANDARD COLORS.
PLEASE NOTE: AVAILABLE IN SOLID COLORS ONLY.

STEP 6: DEALERSHIP INFORMATION

DISTRIBUTOR TO BE BILLED THROUGH: _____

BRANCH: _____

CAREFREE PRESIDENTS CLUB#: _____ PO#: _____

DEALER NAME: _____

ADDRESS: _____

CITY: _____ STATE: _____ ZIP CODE: _____

PHONE: _____ FAX: _____

CONTACT NAME: (IMPORTANT!) _____ EMAIL: _____

MANDATORY!!
Order Cannot Be
Processed Without
Distributor Name

STEP 7: SHIPPING INFORMATION

- ☐ STANDARD SHIPPING ☐ NEXT DAY ☐ SECOND DAY (SOME LOCATION RESTRICTIONS MAY APPLY)
- (ALL NEXT DAY AND SECOND DAY AIR FEES ARE PAID BY DEALER)



IS THE ORDER INFORMATION ACCURATE AND COMPLETE?

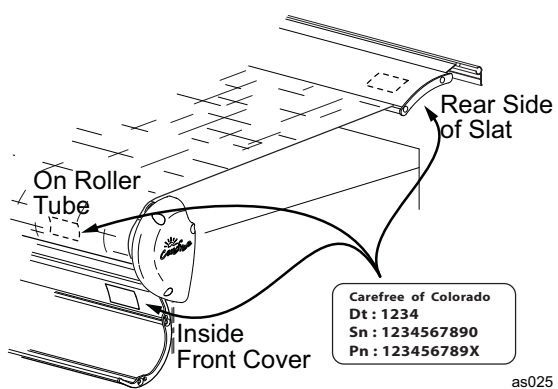
- Incomplete orders may delay processing & delivery!
- All orders are custom manufactured and cannot be returned!

Orders can be placed via

Your Carefree Distributor or FAX: 1-303-460-8329 or on-line at www.e-carefree.com

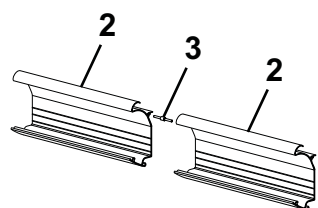
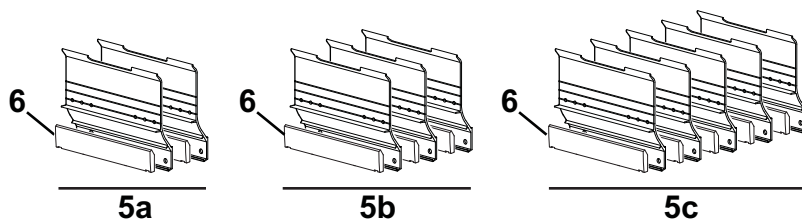
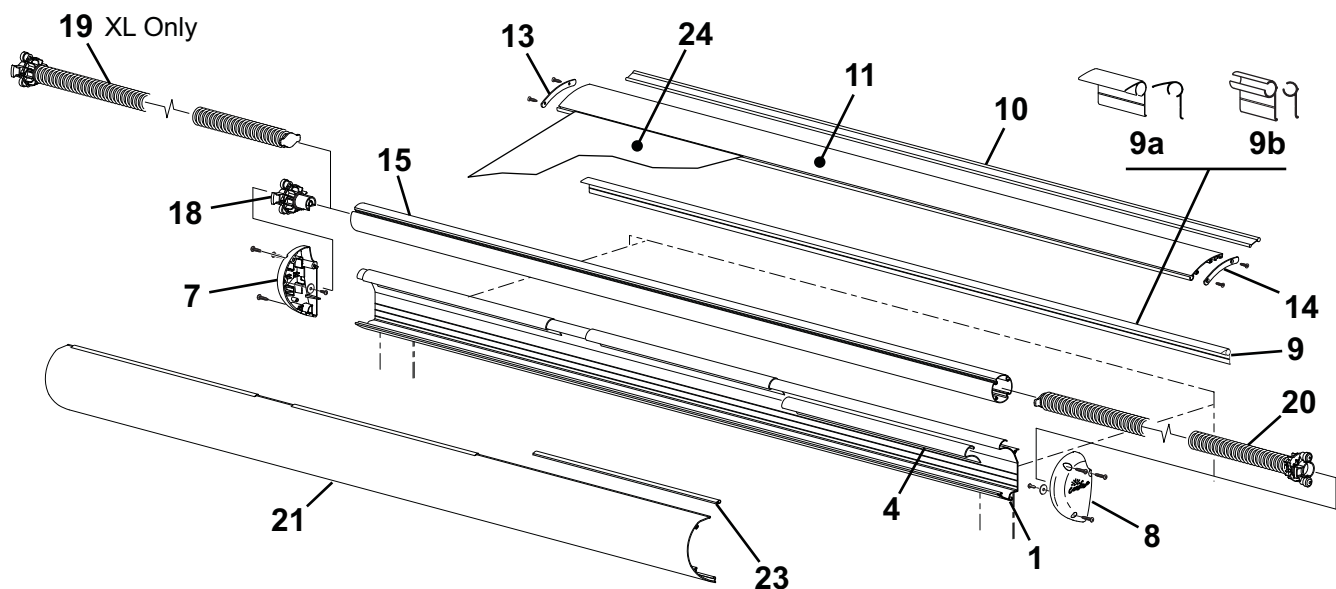
ASCENT PART NUMBER CONFIGURATION

Example: KD09400JV42

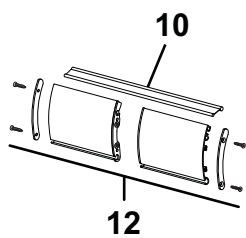
KD	094			00	JV	42			
Ascent w/ deflector only	94" Order Length			White	Black	42" Extension			
STYLE CODE	SIZE (IN INCHES)			FABRIC COLOR	DEFLECTOR / CASE COLOR	EXTENSION			
	CODE	ROOF	FLANGE						
KB = Ascent w/ cover Vinyl. <u>OR</u> Acrylic Fabric	046	39 - 46.9	44 - 51.9	AVAILABLE FABRICS: <u>VINYL OPTIONS - COMPANION</u> (COLOR KEY 1) <u>ACRYLIC</u> (COLOR KEY 2) <u>PLEASE NOTE:</u> AVAILABLE IN SOLID COLORS ONLY.	<u>STANDARD COLORS</u> 25=WHITE JV=BLACK	42 Extension (Standard)			
	052	45 - 52.9	50 - 57.9						
	058	51 - 58.9	56 - 63.9						
	064	57 - 64.9	62 - 69.9						
	070	63 - 70.9	68 - 75.9						
	076	69 - 76.9	74 - 81.9						
	082	75 - 82.9	80 - 87.9						
	088	81 - 88.9	86 - 93.9						
	094	87 - 94.9	92 - 99.9						
	100	93 - 100.9	98 - 105.9						
	106	99 - 106.9	104 - 111.9						
	112	105 - 112.9	110 - 117.9						
	118	111 - 118.9	116 - 123.9						
	124	117 - 124.9	122 - 129.9						
	130	123 - 130.9	128 - 135.9						
	136	129 - 136.9	134 - 141.9						
	142	135 - 142.9	140 - 147.9						
	148	141 - 148.9	146 - 153.9						
	154	147 - 154.9	152 - 159.9						
	KC = Ascent XL w/ cover Vinyl. <u>OR</u> Acrylic Fabric	160	153 - 160.9				158 - 165.9		
166		159 - 166.9	164 - 171.9						
172		165 - 172.9	170 - 177.9						
178		171 - 178.9	176 - 183.9						
184		177 - 184.9	182 - 189.9						
190		183 - 190.9	188 - 195.9						
196		189 - 196.9	194 - 201.9						
202		195 - 202.9	200 - 207.9	PART NUMBER/SERIAL NUMBER LOCATION 					
208		201 - 208.9	206 - 213.9						
214		207 - 214.9	212 - 219.9						
220		213 - 220.9	218 - 225.9						
226		219 - 226.9	224 - 231.9						
232		225 - 232.9	230 - 237.9						
238		231 - 238.9	236 - 243.9						
244		237 - 244.9	242 - 249.9						
250		243 - 250.9	248 - 255.9						
256		249 - 256.9	254 - 261.9						
262		255 - 262.9	260 - 267.9						
268		261 - 268.9	266 - 273.9						
274		267 - 274.9	272 - 279.9						
280	273 - 280.9	278 - 285.9							
286	279 - 286.9	284 - 291.9							
292	285 - 292.9	290 - 297.9							
298	291 - 298.9	296 - 303.9							
304	297 - 304.9	302 - 309.9							
310	303 - 310.9	308 - 315.9							
316	309 - 316.9	314 - 321.9							
322	315 - 322.9	320 - 327.9							
328	321 - 328.9	326 - 333.9							
334	327 - 334.9	332 - 339.9							
340	333 - 340.9	338 - 345.9							
346	339 - 346.9	344 - 351.9							
352	345 - 352.9	350 - 357.9							
358	351 - 358.9	356 - 363.9							
364	357 - 364.9	362 - 369.9							
370	363 - 370.9	368 - 375.9							
376	369 - 376.9	374 - 381.9							
382	375 - 382.9	380 - 387.9							

SLIDEOUT AWNINGS

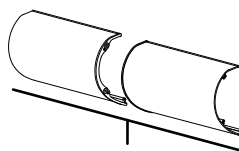
ASCENT ILLUSTRATED PARTS LIST



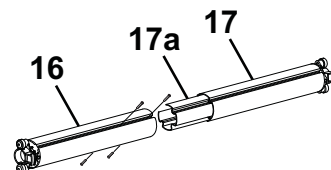
DETAIL A
XL Deflector Assy



DETAIL B
XL Slat Assy
(OEM Only)



DETAIL C
XL Cover Assy



DETAIL D
XL Roll Bar Assy

as501

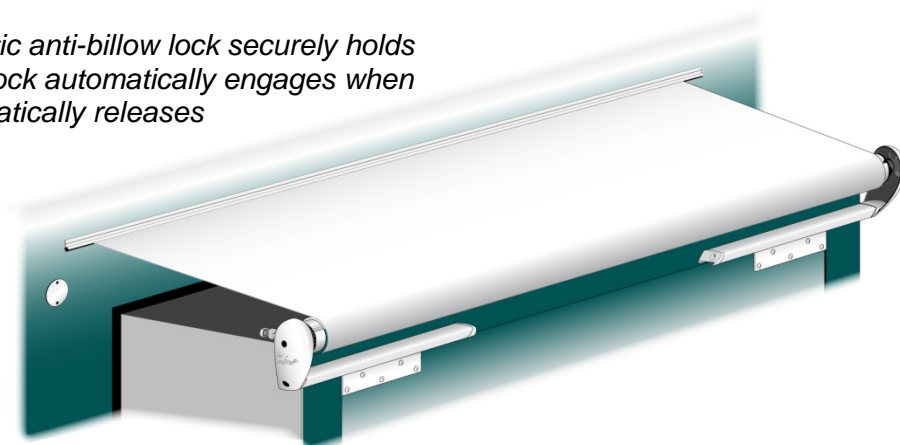
Item	Part Number	Description		Notes
1	R001564XXX-xxx	Deflector	Standard	
2	R001565XXX-xxx	Deflector, Half	XL Only	
3	R001555	Spacer, Shoulder	XL Only	
4	R001563	Deflector Glide, 24"	pkg of 1	
5a	KY5551	Bracket Kit, 2 Brackets, Deflector Mount	White	7
	KY5561	Bracket Kit, 2 Brackets, Deflector Mount	Black	7
5b	KY5552	Bracket Kit, 3 Brackets, Deflector Mount	White	7
	KY5562	Bracket Kit, 3 Brackets, Deflector Mount	Black	7
5c	KY5553	Bracket Kit, 5 Brackets, Deflector Mount	White	7
	KY5563	Bracket Kit, 5 Brackets, Deflector Mount	Black	7
5d	R001711	Mounting Shim, 7.5" x 1" x 3/16" (not shown)	pkg of 1	
6	R001151XXX	Cover, Mounting Bracket		
7	R001554WHT	End Cap, LH	White	
	R001554BLK	End Cap, LH	Black	
8	R001556WHT	End Cap, RH	White	
	R001556BLK	End Cap, RH	Black	
9a	610701xxxX	Awning Rail, Hooded, used w/ slat		
9b	610700xxxXXX	Awning Rail, Standard, used when slat not installed		
10	R001573WHT-xxx	Flex Connect	White	
	R001573BLK-xxx	Flex Connect	Black	
11	R001566XXX-xxx	Weather Slat	Standard	6,8
12	R001567XXX-xxx	Weather Slat	XL Only	2,6,8
13	R001553WHT	End Plate, Slat, LH	White	6
	R001553BLK	End Plate, Slat, LH	Black	6
14	R001558WHT	End Plate, Slat, RH	White	6
	R001558BLK	End Plate, Slat, RH	Black	6
15	R001568-xxx	Roller Tube Assy	Standard	3
16	R001569-xxx	Roller Tube Half, LH	XL	4
17	R001572-xxx	Roller Tube Half, RH	XL	5
17a	R038303-008	Splice		
18	R001559	Spindle and Bearing Assy, LH	Standard	
19	R001561	Spring Assy, LH (identified with red dot)	XL Only	
20	R001560	Spring Assy, RH (identified with green dot)		
21	R001570XXX-xxx	Cover Assy	Standard	
22	R001571XXX-xxx	Cover Assy	XL Only	2
23	R001562	Cover Glide, 24"	pkg of 2	
24		Canopy Only	Refer to Canopy Order Form	

- Notes:
1. XXX = Color; xxx = Length in inches
 2. Ascent XL components (items 12, 22) are shipped in two pieces and must be assembled during installation.
 3. Roller tube assy (item 15) is complete and includes roller tube, LH spindle assy (item 18) and pre-wound RH spring assy (item 20).
 4. XL LH roller tube assy (item 16) is complete and includes roller tube half, screws and pre-wound LH spring assy (item 19)
 5. XL RH roller tube assy (item 17) is complete and includes roller tube half, splice, screws and pre-wound RH spring assy (item 20).
 6. The slat option is offered for select OEM installations and is not available for aftermarket installations. Includes items 10, 13, 14.
 7. Bracket kits (items 5) are based on order length. Item 5a used with awnings 112" or less; item 5b used with awnings 118" – 196"; item 5c used with XL awnings 202" and longer.
 8. Slat (item 11, 12) comes with flex connect (item 10) and end plates (items 13, 14).

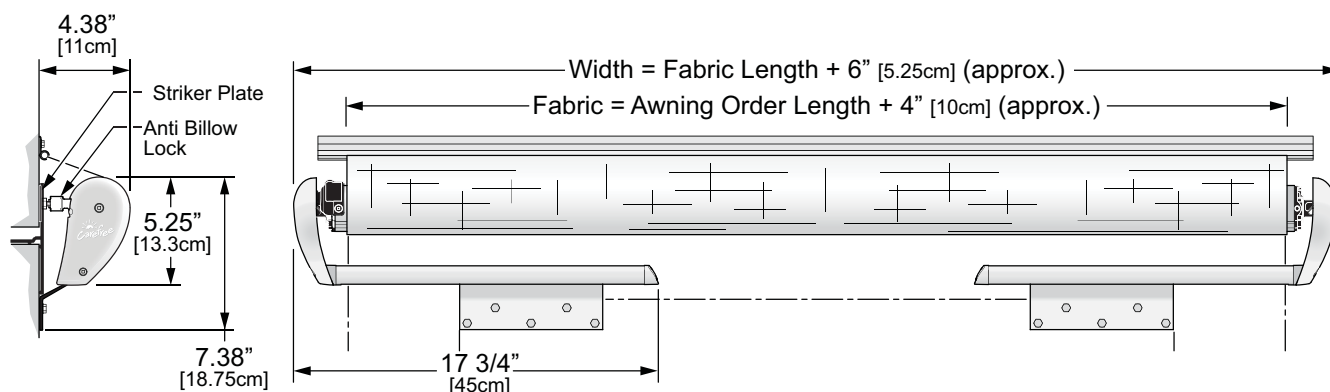
SLIDEOUT AWNINGS

SLIDEOUT COVER

- *Light weight cover for slide-out rooms with style and performance;*
- *Simple Installation;*
- *Two mounting bracket sizes available to accommodate a range of room flange sizes;*
- *Carefree's innovative automatic anti-billow lock securely holds the fabric during travel. The lock automatically engages when the room is closed and automatically releases when the room is opened.*



SPECIFICATIONS



Shown with tall bracket, dimensions are approximate. Actual dimensions may vary based on installation and room configuration.

cs007pc

AVAILABLE LENGTHS: 42" [107cm] - 196" [498cm]

(measured box length)

EXTENSION: 42" [107cm]

FABRIC TENSION One spring mounted in RH end of roller tube

COLOR: *Hardware:* White, Black
Fabric: White, Black or Gray Vinyl

WARRANTY

The Slideout Cover is covered by the standard Carefree of Colorado 1 year Limited Warranty.

ON-LINE AT WWW.CAREFREEOFCOLORADO.COM

◆ Product Manuals ◆ Fabric Options ◆ Warranty Information

SLIDEOUT COVER ORDER FORM

STEP 1: ROOM SIZE**MEASURE:**

Box ROOM LENGTH: _____ OR FLANGE TO FLANGE LENGTH: _____

STEP 2: BRACKET SIZE

MEASURE FLANGE HEIGHT: _____

☐ SHORT BRACKET USED FOR FLANGE HEIGHTS 0" - 3.25"☐ TALL BRACKET USED FOR FLANGE HEIGHTS 3.26" - 5.25" (MAXIMUM)**STEP 3: HARDWARE COLOR**☐ WHITE ☐ BLACK**STEP 4: CANOPY COLOR (VINYL)**☐ WHITE ☐ BLACK ☐ GRAY**STEP 5: DEALERSHIP INFORMATION**

DISTRIBUTOR TO BE BILLED THROUGH: _____

BRANCH: _____

CAREFREE PRESIDENTS CLUB#: _____ PO#: _____

DEALER NAME: _____

ADDRESS: _____

CITY: _____ STATE: _____ ZIP CODE: _____

PHONE: _____ FAX: _____

CONTACT NAME: (IMPORTANT!) _____ EMAIL: _____

MANDATORY!!
Order Cannot Be
Processed Without
Distributor Name**STEP 6: SHIPPING INFORMATION**☐ STANDARD SHIPPING ☐ NEXT DAY ☐ SECOND DAY (SOME LOCATION RESTRICTIONS MAY APPLY)
(ALL NEXT DAY AND SECOND DAY AIR FEES ARE PAID BY DEALER)**IS THE ORDER INFORMATION ACCURATE AND COMPLETE?**

→ Incomplete orders may delay processing & delivery!

→ All orders are custom manufactured and cannot be returned!

*Orders can be placed via*Your Carefree Distributor or FAX: 1-303-460-8329 or on-line at www.e-carefree.com

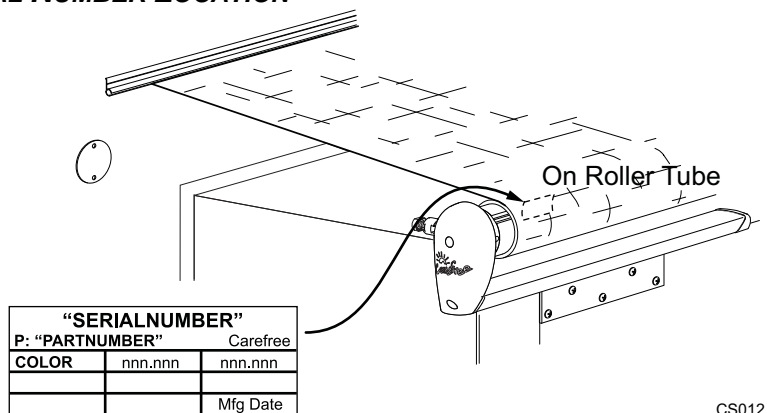
SLIDEOUT AWNINGS

SLIDEOUT COVER ROLLER TUBE PART NUMBER CONFIGURATION

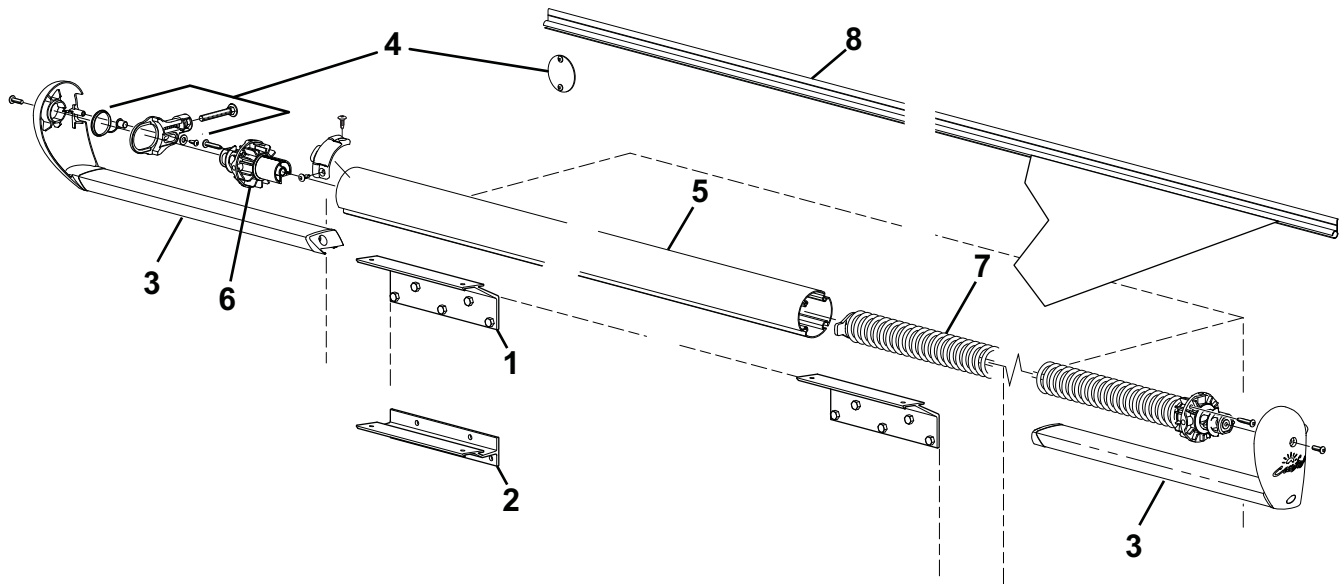
Example: LH0970042

LH	097			00	42
Slideout Cover	97" Length			White	42" Extension
STYLE CODE	SIZE (IN INCHES)			FABRIC COLOR	EXTENSION
	CODE	ROOF	FLANGE		
LH	049	42 - 49.9	47 - 54.9	Vinyl 03= SOLID GRAY 00= WHITE 62= BLACK	42" Extension (Standard)
	057	50 - 57.9	55 - 62.9		
	065	58 - 65.9	63 - 70.9		
	073	66 - 73.9	71 - 78.9		
	081	74 - 81.9	79 - 86.9		
	089	82 - 89.9	87 - 94.9		
	097	90 - 97.9	95 - 102.9		
	105	98 - 105.9	103 - 110.9		
	113	106 - 113.9	111 - 118.9		
	121	114 - 121.9	119 - 126.9		
	129	122 - 129.9	127 - 134.9		
	137	130 - 137.9	135 - 142.9		
	145	138 - 145.9	143 - 150.9		
	153	146 - 153.9	151 - 158.9		
	161	154 - 161.9	159 - 166.9		
	169	162 - 169.9	167 - 174.9		
	177	170 - 177.9	175 - 182.9		
	185	178 - 185.9	183 - 190.9		
	196	186 - 196	191 - 202		

PART NUMBER/SERIAL NUMBER LOCATION



SLIDEOUT COVER ILLUSTRATED PARTS LIST



cs501

Item	Part Number	Description	Notes
1	R012546-005	Bracket, Mounting Kit, Tall	White 2
	R012546-006	Bracket, Mounting Kit, Tall	Black 2
2	R012545-005	Bracket, Mounting Kit, Short	White 2
	R012545-006	Bracket, Mounting Kit, Short	Black 2
3	R012540-005	Endcap and Mounting Tube Assy	White 3
	R012540-006	Endcap and Mounting Tube Assy	Black 3
4	R001583	Plunger Kit	White
	R001584	Plunger Kit	Black
5	R001580-xxx	Roller Tube Assy	4
6	R001581	Spindle Assy, LH	
7	R001582	Spring Assy, RH	
8		Awning Rail	See Hardware and Accessories

- Notes:
- xxx = Length in inches
 - Items 1 & 2 contains 2 ea brackets and attaching hardware.
 - Item 3 contains 1 ea LH and RH end caps w/ mounting tubes assembled. Plunger mechanism is part of the LH endcap assembly.
 - Roller tube assy (item 5) is complete and includes roller tube, LH spindle assy (item 6) and prewound spring assy (item 7).

SOK III

Carefree's SOK III provides all the benefits of the SOK II and more.

Helps keep leaves, debris and rain off the roof and out of the vehicle and helps keep the room cooler by blocking the sun from the roof.

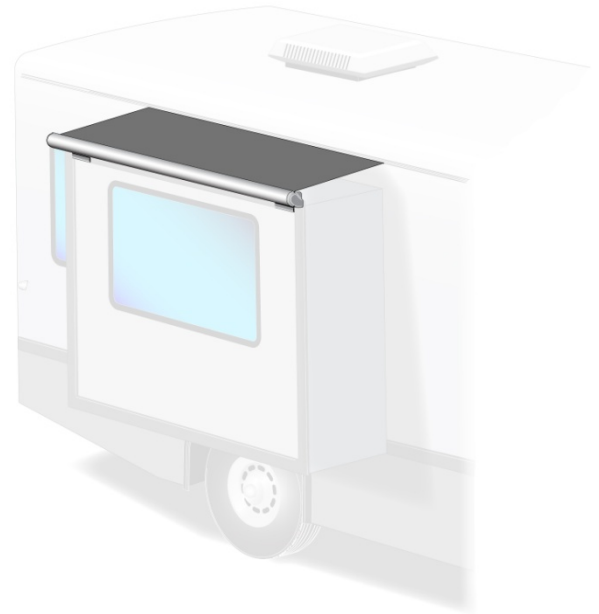
There are no locks to worry about or anti-billow devices to adjust.

The wind deflector is a standard integrated part of the SOK III. An optional front cover is available for full case enclosure.

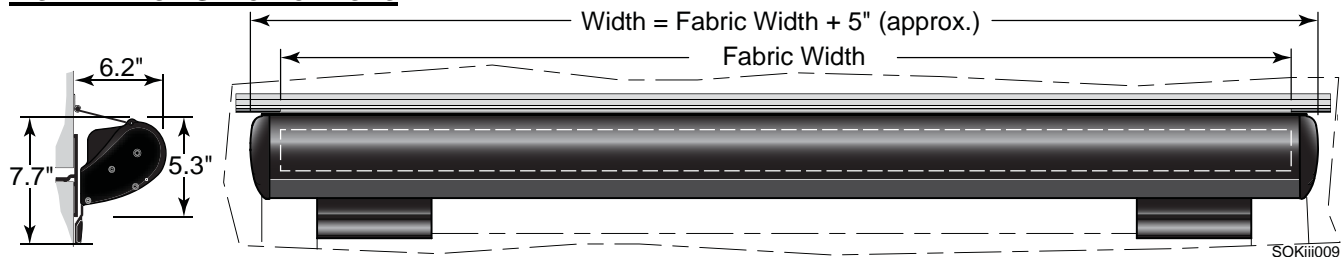
The sleek and stylish case design blends with the coach sidewall.

SELLING BENEFITS

- ☑ Helps keep leaves, debris and rain off the roof and out of the vehicle.
- ☑ Exclusive center roller support.
- ☑ Helps keep the room cooler by blocking the sun from the roof.
- ☑ Automatically moves in and out with the Slideout.
- ☑ No locks to worry about or anti-billow devices to adjust.
- ☑ Available in Vinyl, Standard or custom Acrylic fabrics.
- ☑ Wind deflector is standard.
- ☑ The front cover option provides a clean enclosed appearance and is easy to open for cleaning and service.
- ☑ The roller tube can be easily accessed and serviced.
- ☑ Brackets and metal end caps are white with white case or deflector, black with black or satin.
- ☑ Complete with roller, awning rail and hardware.
- ☑ Designed to match the sleek look of Carefree's Mirage, Eclipse, Travel'r and SL Window Awnings.



INSTALLATION SPECIFICATIONS



Dimensions are approximate. Actual dimensions may vary based on the slide out configuration and options installed.

- Canopy will measure approximately 4" longer than stated awning size.
- See installation and operations manual. (Available online at www.carefreeofcolorado.com).

MEASURING AND ORDERING:

- Box or Flange measurement of Slideout room.
- Slideout room extension.
- Canopy fabric and color.
- Wind deflector or full case option.
- Wind deflector or case color.
- All orders are custom and Non-Returnable.

SHIPPING:

- Applicable freight charges apply.

SOKIII ORDER FORM

STEP 1: SIZE AND OPTIONAL EQUIPMENT**MEASURE:**

Box Room Length: _____ OR Flange to Flange Length: _____ Box Extension: _____

Would you like to purchase the optional full case?

☐ YES*(All models have deflector)***STEP 2: SELECT CANOPY FABRIC AND COLOR**☐ **VINYL OPTIONS - COMPANION**
(COLOR KEY 1)☐ **ACRYLIC**
(COLOR KEY 2)☐ **FULLVIEW**
(COLOR KEY 3)☐ **POLYWEAVE**
(COLOR KEY 4)

Color Code	Name	Color Code	Name	Color Code	Name	Color Code	Name

REFER TO THE COLOR CHART FOR STANDARD COLORS. FOR CUSTOM ACRYLIC COLORS, GO TO
[Carefree Fabric and Hardware Colors](http://www.carefreeofcolorado.com) AT www.carefreeofcolorado.com

PLEASE NOTE: CUSTOM ACRYLIC COLORS ARE OFFERED IN SOLID OR HORIZONTAL STRIPES.

STEP 3: SELECT WIND DEFLECTOR OR CASE COLOR**STANDARD COLORS**☐ SATIN☐ WHITE☐ BLACK**STEP 4: DEALERSHIP INFORMATION**

DISTRIBUTOR TO BE BILLED THROUGH: _____

BRANCH: _____

CAREFREE PRESIDENTS CLUB#: _____ PO#: _____

DEALER NAME: _____

ADDRESS: _____

CITY: _____ STATE: _____ ZIP CODE: _____

PHONE: _____ FAX: _____

CONTACT NAME: (IMPORTANT!) _____ EMAIL: _____

MANDATORY!!
 Order Cannot Be
 Processed Without
 Distributor Name

STEP 5: SHIPPING INFORMATION
☐ STANDARD SHIPPING
 ☐ NEXT DAY
 ☐ SECOND DAY
 (SOME LOCATION RESTRICTIONS MAY APPLY)
 (ALL NEXT DAY AND SECOND DAY AIR FEES ARE PAID BY DEALER)
**IS THE ORDER INFORMATION ACCURATE AND COMPLETE?**

→ Incomplete orders may delay processing & delivery!

→ All orders are custom manufactured and cannot be returned!

Orders can be placed via

Your Carefree Distributor or FAX: 1-303-460-8329 or on-line at www.e-carefree.com

SLIDEOUT AWNINGS

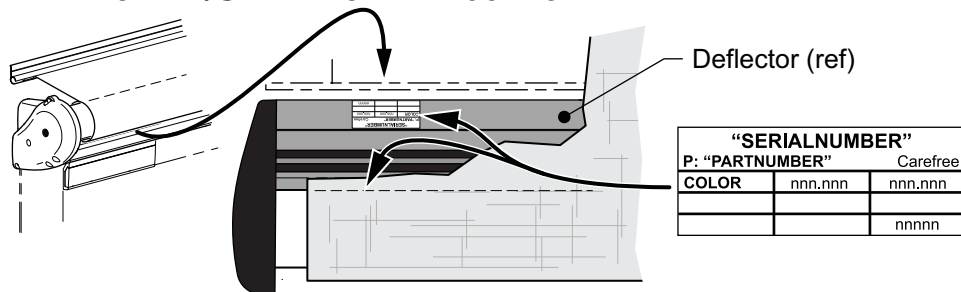
SOK III PART NUMBER CONFIGURATION

Example: UQ1170025

Example: SQT170020

UQ	117			00	25
SOK III with Deflector	110"-117.9" Length (Roof Size) (Measure Roof)			White	White
STYLE CODE	SIZE (IN INCHES)			FABRIC COLOR	DEFLECTOR / CASE COLOR
	CODE	ROOF	FLANGE		
UQ =	061	54-61.9	59-66.9	AVAILABLE FABRICS:	STANDARD COLORS
SOKIII with Vinyl <u>OR</u>	069	62-69.9	67-74.9	VINYL OPTIONS -	25=WHITE
Acrylic Fabric	077	70-77.9	75-82.9	COMPANION	23=SATIN
And Deflector	085	78-85.9	83-90.9	(COLOR KEY 1)	JV=BLACK
UP =	093	86-93.9	91-98.9	ACRYLIC	
SOKIII with Vinyl <u>OR</u>	101	94-101.9	99-106.9	(COLOR KEY 2)	
Acrylic Fabric	109	102-109.9	107-114.9	CUSTOM ACRYLIC	
And Case	117	110-117.9	115-122.9	(SEE NOTES)	
	125	118-125.9	123-130.9	FULL VIEW	
	133	126-133.9	131-138.9	(COLOR KEY 3)	
	141	134-141.9	139-146.9	POLYWEAVE	
	149	142-149.9	147-154.9	(COLOR KEY 4)	
	157	150-157.9	155-162.9		
	165	158-165.9	163-170.9		
	173	166-173.9	171-178.9		
	181	174-181.9	179-186.9		
	189	182-189.9	187-194.9		
	Note: Units longer than 189 (roof) are the SOKIII XL. OEM Model – not available for new aftermarket installations.			FOR STANDARD COLORS, REFER TO THE COLOR CHART ON PAGE 3.	
				FOR CUSTOM ACRYLIC COLORS, GO TO Carefree Fabric and Hardware Colors AT www.carefreeofcolorado.com	
				PLEASE NOTE: CUSTOM ACRYLIC COLORS ARE OFFERED IN SOLID OR HORIZONTAL STRIPES.	

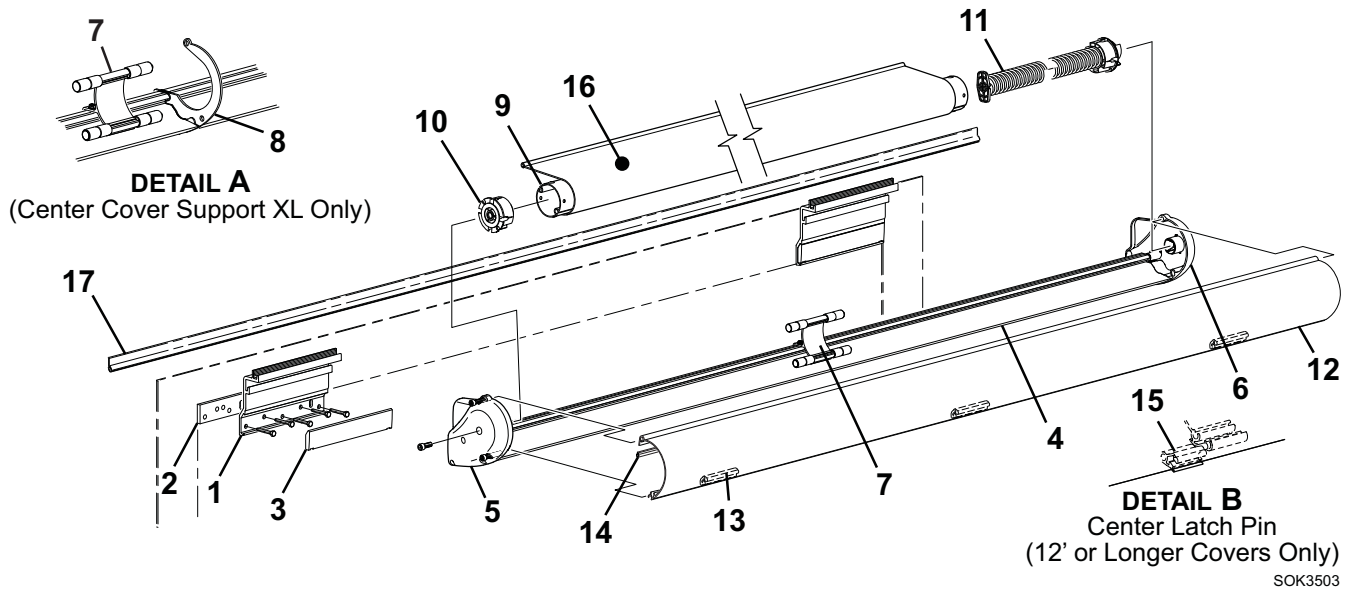
PART NUMBER/SERIAL NUMBER LOCATION



Serial Number/Part Number is located on the deflector and beneath the fabric on the roller tube

SOK3047

SOKIII ILLUSTRATED PARTS LIST



Item	Part Number	Description	Notes
1	R001150XXX	Bracket, Deflector Mount, Short	4.5" 6
2	R001534	Spacer, 1/4", Deflector Bracket	sold seperately
3	R001151XXX	Cover, Deflector Mount Bracket	
4	R001153XXX-xxx	Deflector Assy	
	R001338XXX-xxx	Deflector Assy, LH	XL Only
	R001339XXX-xxx	Deflector Assy, RH	XL Only
5	R001520XXX	End Cap, LH	Screw Cover Attach
6	R001521XXX	End Cap, RH	Screw Cover Attach
7	R001156	Roller Support	
8	R001258	Center Support Plate (includes cover attach pins)	XL Only
9	610400-xxx	Roller Tube	
	33xxx	Roller Tube Assy	XL Only 2
	R001343	Roller Tube Splice	XL Only
10	R001164	Idler Bearing, Roller Tube, LH	
11	R001165	Spring Assy	
	R001165XL	Spring Assy	XL Only
12	R001169XXX-xxx	Front Cover Assy	5
	R001337XXX-xxx	Front Cover Assy	XL Only 3,5
13	R001364	Bumper, Deflector, Rubber	pkg of 4
14	R001562	Bumper Guard	pkg of 2 4
15	R001186	Center Latch Pin	used on 12' or Longer Covers Only
16		Canopy Only	Refer to Canopy Order Form
17	0157xxx	Awning Rail	See Hardware and Accessories
18	R012711-005	Hardware Pack, White	not shown
	R012711-006	Hardware Pack, Black	not shown

- Notes:
1. XXX = Color; xxx = Length in Inches
 2. The XL replacement Roller Tube Assy includes the roller tube halves, splice, rivets, roller bearing (item 10) and pre-wound spring (item 11).
 3. XL replacement cover includes both the LH and RH halves.
 4. Set of two bumper guards (item 14) is included with canopy replacements.
 5. Replacement covers mount with screws. If replacing an older cover that uses spring pins, it will be necessary to also order end caps (items 5,6).
 6. Units 155" or less (order length) uses 2 brackets. Units 156"-191" uses 3 brackets. XL Units 283" or longer uses a quantity of 5 brackets.

DISCONTINUED PRODUCTS

The following products have been discontinued and are no longer available. Limited parts availability.
Refer to PC supplement 070000 -DIS for available parts.

PATIO AWNINGS

- One-Touch
- Quick 'N' EZ
- Super Sport
- Sidewinder II
- Spirit FX
- Simplicity
- Freedom Patio (series code TW)
- Freedom Patio (series code AV)

WINDOW & OTD AWNINGS

- Omega
- Omega II
- Guardi-Awn
- 12V Window Awning
- Manual Window Awning (Standard and XL)
- Freedom OtD Slider - Manufactured Prior to Sept 2008
- Freedom OtD Slider - Manufactured After Sept 2008
- Freedom Window & OtD - Manufactured Prior to Sept 2008
- Freedom Window & OtD - Manufactured After Sept 2008

SLIDEOUT AWNINGS

- Summit w/ Lift Arms
- SOKII with Deflector
- SOKII with Manual Lock