



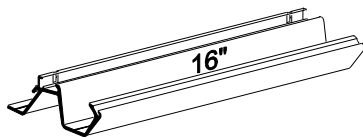
FREEDOM RM ADAPTOR BRACKETS

KIT No: BS0001

FLAT ROOF INSTALLATION 4M AND SMALLER

Kits

PACKAGE CONTENTS:



Mounting Bracket (x2)



Neoprene Strip



Square Nut, M6 (x4)

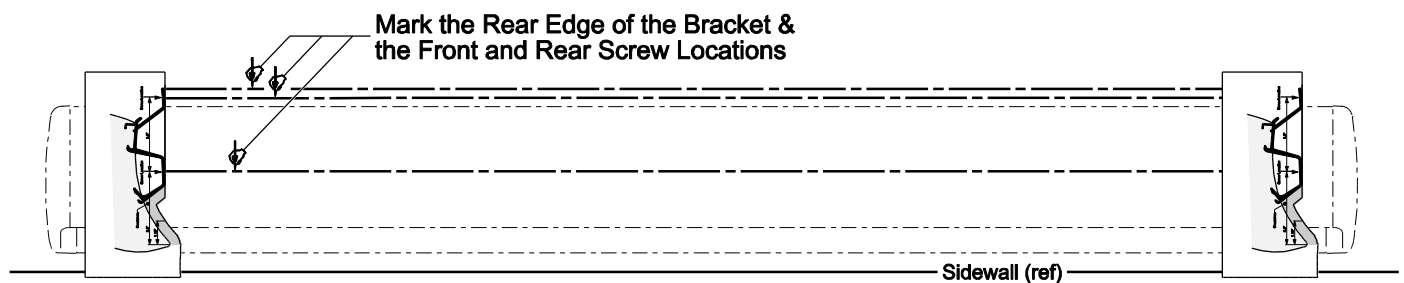


Screw, M6 x 20 (x4)

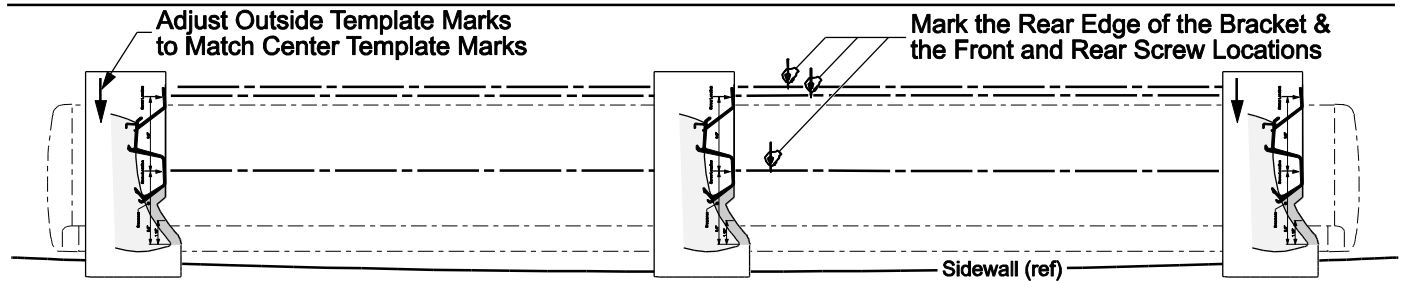
BS0001b

BRACKET LAYOUT

- Determine the location of the awning.
- To aid in positioning the brackets, a full size template is furnished on the last page of this manual. Copy and paste or tape the page to a piece of cardboard then cut along the dotted line.



Vehicles with Flat Sides



Vehicles with Tapered Sides

BS0001e

- On each end of the awning location, set the template on the roof and mark the position of the rear edge and the mounting hole locations. Connect the marks; these will be the installation guidelines.

For vehicles with tapered sides: Use the template and mark the locations in the center of the awning. Adjust the outer marks to align with the center marks. The brackets must be straight to properly mount the awning.

- In the interior, there must be structural framing beneath the locations of the both the front and rear mounting hole locations. If there is none, the installer must furnish structural framing in these areas.

4.1. The brackets must be secured to a backing plate as large as the brackets. The backing plate must be fully attached to the structure of the vehicle.

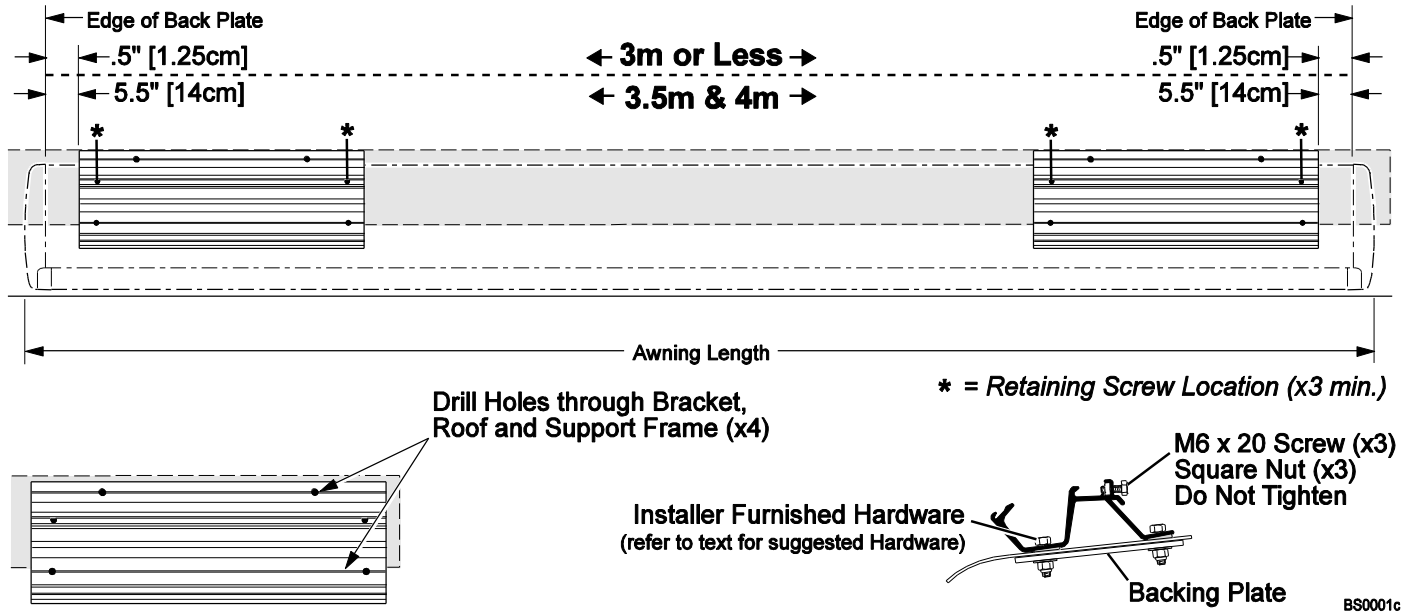
4.1.1. Aluminum backing plates must be a minimum .125" thick.

4.1.2. Steel backing plates must be a minimum 13 gauge (.09" thick).

4.1.3. Wood backing plates must be thick enough to allow a minimum of 1.5" of thread engagement.

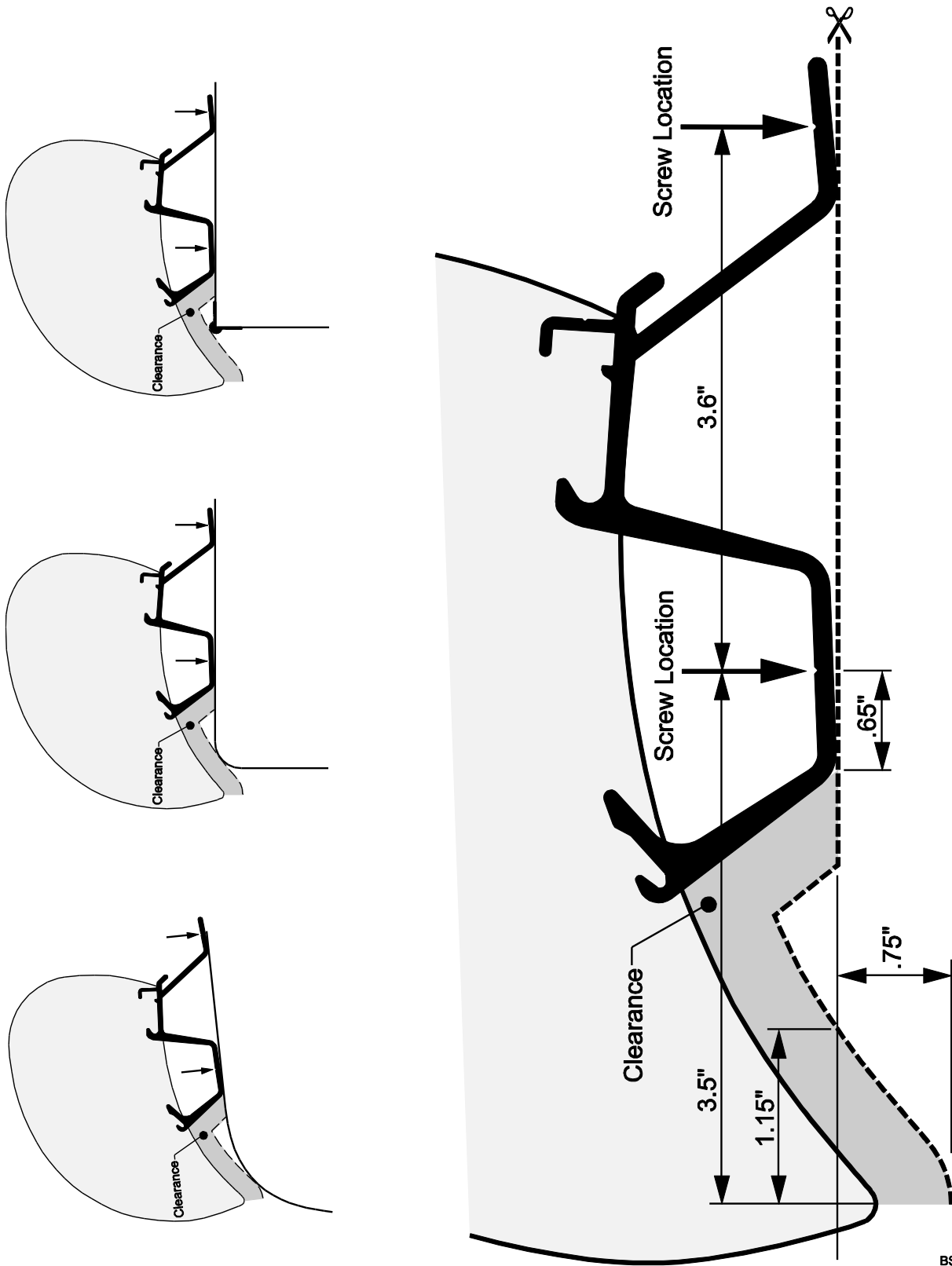
NOTE: For wood backing plates it is recommended to use 1/4" lag screws and washers. The screws must be long enough to provide a minimum of 1.5" of thread engagement in the wood.

BRACKET INSTALL



NOTICE For proper operation of the awning, the brackets must be placed under the arm knuckles. If it is necessary to position the brackets differently than above, use the knuckle positions shown in the awning install manual.

1. Position the brackets on the roof.
 - 1.1. The brackets must be fully supported by structure and/or the installer furnished backing plates.
 - 1.2. Make sure that the outer edges of the brackets are within the dimension range shown for the end of the awning. Adjust the bracket and awning position as necessary.
2. Drill four holes through the brackets, roof and structure as shown. Hole size will depend on hardware used.
3. Secure the brackets with the installer furnished hardware.
4. In the rear track of the mounting brackets, start four (4) M6 x 20 screws and square nuts through the retaining screw holes. Do not tighten at this time.
5. Mount the awning according to the installation manual for the awning.



BS0001d