



SERVICE MANUAL

ASCENT

Product style codes: AC, BZ, CD, CE, CJ, IH, KB, KC, KD, SC, SS

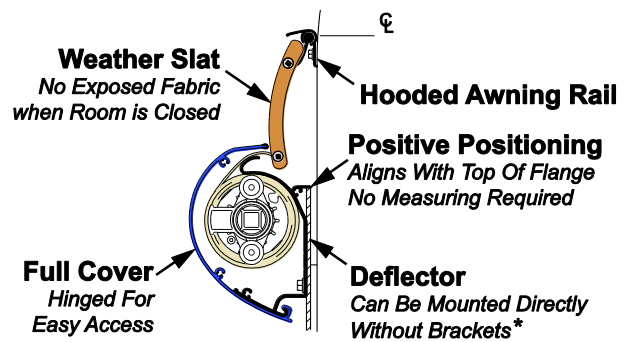
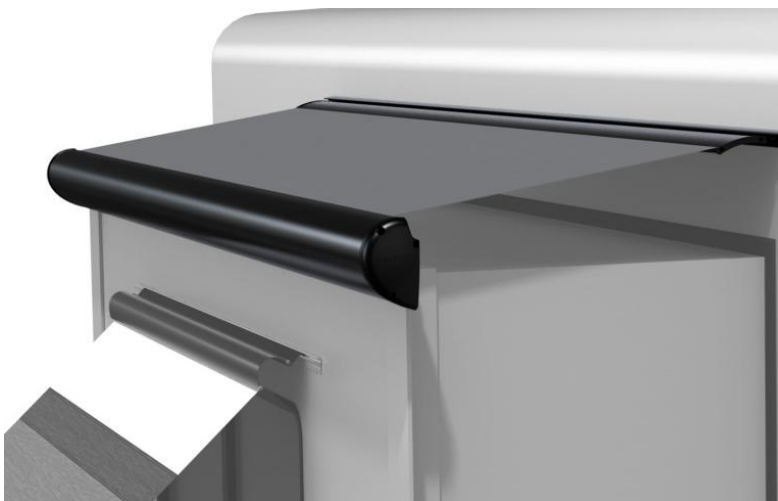
RV

SLIDE-OUT COVER



Read this manual before servicing this product. Failure to follow the instructions and safety precautions in this manual can result in personal injury and/or cause the product to not operate properly.

**THIS MANUAL CONTAINS INFORMATION FOR: AFTERMARKET ASCENT AND ASCENT XL
OEM ASCENT W/ SLAT
OEM SS AND SC**



* An optional mounting bracket is available for curved flange applications or applications that the deflector cannot be mounted directly.

as001c

OEM Ascent w/Slat Shown

These instructions apply to all models listed. Details and procedures unique to a specific model are labeled appropriately

PROPRIETARY STATEMENT

The Ascent series of Slide-Out Room Covers is a product of Carefree of Colorado, located in Broomfield, Colorado, USA. The information contained in or disclosed in this document is considered proprietary to Carefree of Colorado. Every effort has been made to ensure that the information presented in the document is accurate and complete. However, Carefree of Colorado assumes no liability for errors or for any damages that result from the use of this document.

The information contained in this manual pertains to the current configuration of the models listed on the title page. Earlier model configurations may differ from the information given. Carefree of Colorado reserves the right to cancel, change, alter or add any parts and assemblies, described in this manual, without prior notice.

Carefree of Colorado agrees to allow the reproduction of this document for use with Carefree of Colorado products only. Any other reproduction or translation of this document in whole or part is strictly prohibited without prior written approval from Carefree of Colorado.

SAFETY INFORMATION



This is the safety alert symbol. It is used to alert individuals to potential personal injury hazards. Obey all safety messages that follow this symbol to avoid possible personal injury or death.



Indicates a hazardous situation, which if not avoided, could result in death or serious bodily injury.



Indicates a hazardous situation, which if not avoided, may result in minor or moderate bodily injury.



Indicates a situation that may result in equipment-related damage.

General Safety:



This product can expose you to chemicals including Di-isodecyl phthalate (DIDP), Vinyl Chloride and Formaldehyde, which are known to the state of California to cause cancer or birth defects or other reproductive harm. For more information visit www.P65warnings.ca.gov



Shock Hazard. Always disconnect battery or power source before working on or around the electrical system.



Always wear appropriate safety equipment (i.e. goggles).



Always use appropriate lifting devices and/or helpers when lifting or holding heavy objects.



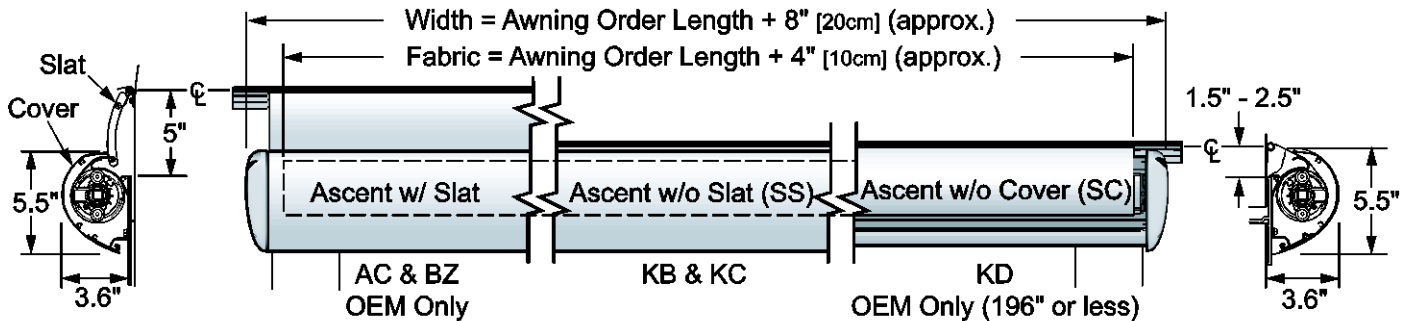
When using fasteners, do not over tighten. Soft materials such as fiberglass and aluminum can be "stripped out" and lose the ability to grip and hold.

TABLE OF CONTENTS

- Product Overview 2**
- The Front Cover - All Models 3**
- Canopy Replacement - All Models 4**
 - Removing the Fabric and Roller Tube 4
 - Installing the Fabric and Roller Tube 5
- Spring/Roll Bar Replacement 6**
 - Removing the Roller Tube Assembly 6
 - Replacing the Spring Assembly 7
 - Assembling the XL Roller Tube Assembly 9
 - Installing the Roller Tube Assembly 9
- Standard Maintenance 10**
 - Fabric Care 10
 - Mildew 10
 - Pooling 10
 - Hardware Maintenance 10
- Part Number Listing 11**
 - Part Number/Serial Number Location 11
 - Illustrated Parts List 12

PRODUCT OVERVIEW

- Stylized to blend smoothly with the coach wall;
- Simplified installation, deflector mounts directly to room and aligns with the top of the room flange;
- Improved pitch provides for rain run off;
- Hinged cover provides easy access for cleaning and service while providing a closed, finished appearance;
- Weather slat eliminates billowing. When the room is closed, no fabric is exposed;
- Available in standard and XL versions.



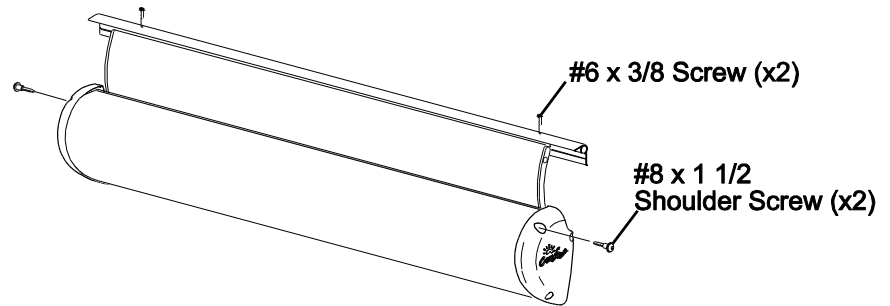
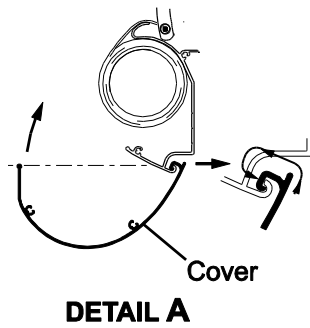
Dimensions are given for reference only and may vary based on the slide-out configuration and installation specifics. For detailed installation information, refer to the product manuals available on-line at www.carefreeofcolorado.com

as029b

AVAILABLE LENGTHS: (measured box length)	Standard 42" - 196" XL 197" - 384"	AVAILABLE EXTENSION: Up to 42"
Pitch w/ Slat:	5° @ 42" extension (pitch increases as extension decreases)	
FABRIC TENSION	One spring for standard widths; Two springs for XL models	
COLOR:	<i>Hardware:</i>	White, Black
	<i>Fabric:</i>	Woven Acrylic, Polyweave and Vinyl (refer to sales literature for available colors)
WEIGHT:	<i>Standard</i>	Base Weight @ 42" Box Length = 22.2 lbs; for every 12" increase, add 3.6 lbs
	<i>XL</i>	Base Weight @ 197" Box Length = 75.2 lbs; for every 12" increase, add 3.6 lbs
<i>Weight calculation is approximate. Actual weight may vary based on type of canopy fabric and specific installation details</i>		

THE FRONT COVER - ALL MODELS

To Open the Cover



as010

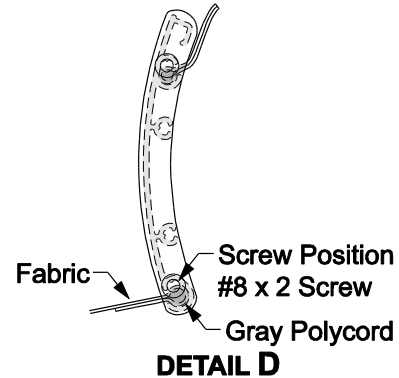
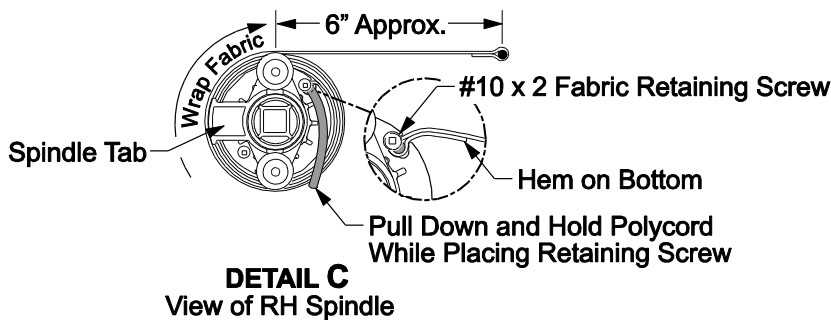
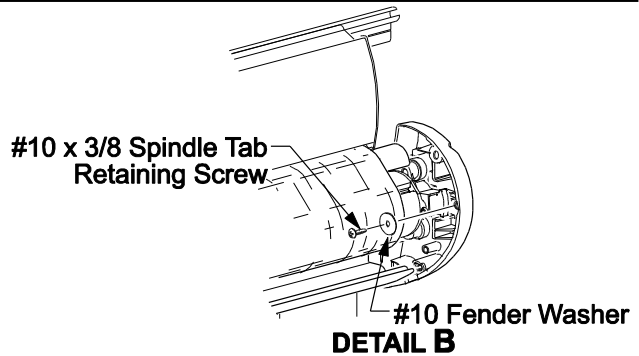
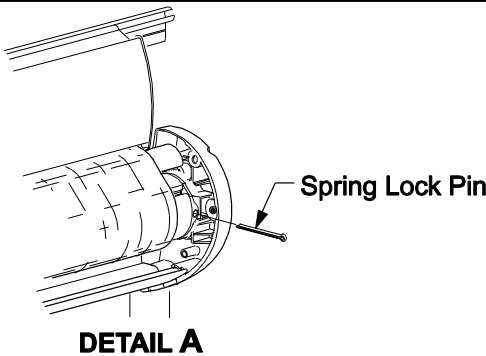
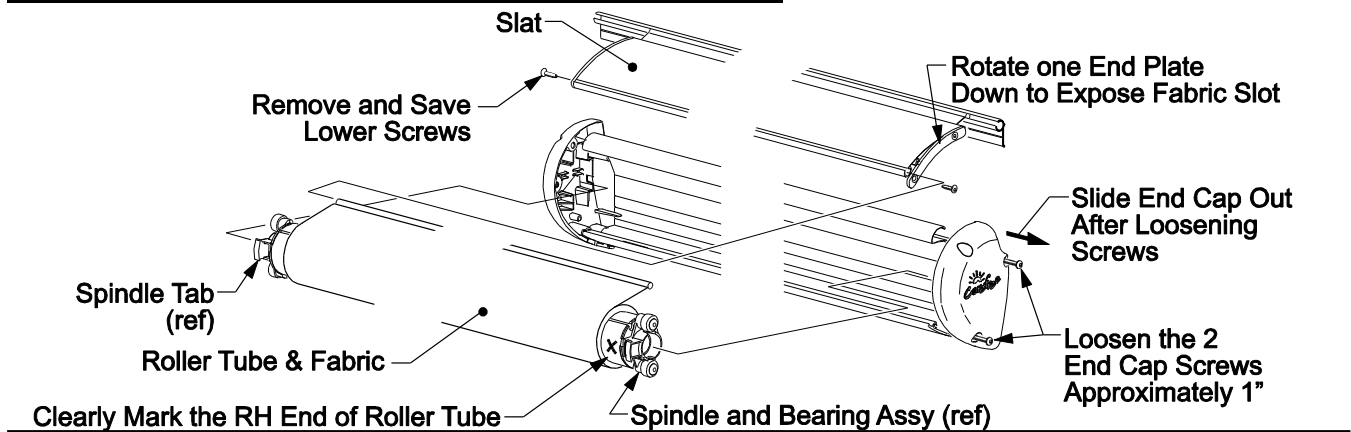
1. Open the room approximately 3" - 4". This will relieve the fabric tension against the front cover.
2. Remove the two retaining screws from the end caps (one on each side). Save the screws.
3. Rotate the cover down. The cover can hang down for cleaning and service.
4. (*Detail A*) If necessary to remove the cover, hold the cover perpendicular to the deflector then lift and unhook the cover from the back of the case.

To Install the Cover

5. Hold the cover perpendicular to the deflector, lift and hook the cover onto the back of the case.
6. Rotate the cover up and secure using two (2) #8 x 1 1/2 socket head cap screws. .

NOTE: There will be a small gap between the cover and end cap. DO NOT attempt to close the cap by over tightening the screw, maximum torque is 30 in-lbs.

CANOPY REPLACEMENT - ALL MODELS



as024

REMOVING THE FABRIC AND ROLLER TUBE

1. Open the room approximately 3"-4".
2. Open the front cover. Refer to page 3.

CAUTION The springs are wound and under tension. The spring locking pins must be inserted before continuing otherwise the roller tube can spin out of control and cause personal injury and/or property damage.

3. (Detail A) On the right end of the roller tube, insert a spring locking pin through the roller bearing and spindle; it may be necessary to twist the roller to align the holes. The locking pin is a 3/16 x 1 1/4 cotter pin or equivalent. Place tape over the head of the pin to avoid the pin coming out.

IMPORTANT NOTE: The XL model has two springs. A second spring locking pin must also be inserted through the LH bearing and spindle and taped in place before continuing.

4. If installed, on the slat assembly remove the lower screws that secure the fabric and slat. It is not necessary to remove the upper screws. On one end of the slat, swivel the end plate out of the way to clear the lower slot of the slat.
5. (Detail B) Inside the end caps, remove the spindle tab retaining screws and washers. There is one screw in each end cap.

6. On one end of the deflector, loosen the screws for the end cap approximately 1" and slide the end cap out. It is not necessary to remove the screws and end cap from the deflector.
7. Lift the roller tube out of the deflector.
8. Slide the roller tube and fabric out of the slat or awning rail.
9. Clearly mark the right end of the roller tube for reference then unroll the fabric from the roller tube.
10. Remove the retaining screws from the roller tube spindles and save. Remove the fabric from the roller tube.

INSTALLING THE FABRIC AND ROLLER TUBE

If replacing or repairing the roller tube, make the necessary repairs before continuing.

1. Unfold the replacement fabric.
2. *(Detail C)* Slide the black polycord of the fabric into the fabric slot located on the opposite side of the spindle tabs. Orient the fabric is with the hem on the bottom (the hem will then roll against the roller tube). Center the fabric in the roller tube.
3. *(Detail C)* After the fabric is centered, pull and hold the excess polycord in the bottom of the fabric slot. Place one (1) #10 x 2 PHSD screw through the fabric slot hole and polycord. The screw must be positioned to thread into the metal of the roller tube slot and the edge of the polycord. The screw action will pull the polycord further into the slot hole. DO NOT OVERTIGHTEN, maximum torque 16 in-lbs.
4. After the screw is installed, trim the excess polycord.
5. After tightening the fabric in the slot from one end of the roller tube to the other end, repeat step 5 and 6 to secure the fabric.
6. Roll the fabric onto the roller tube. Note the direction of the wrap as shown in Detail B. The view is of the RH spindle that was marked earlier. Allow approximately 6" of fabric to extend past the roller tube.
7. Lift the roller tube up and slide the fabric polyrod into the front slot of the slat or awning rail. Center the fabric. Trim any excess polycord that extends past the slat.
8. Roll up any slack material onto the roller tube.
9. Insert the roller tube into the fixed end cap. Note the orientation of the spindle tabs at the ends of the roller tube; these must point forward (away from coach).
10. Align the RH spindle of the roller tube then push the loose end cap onto the roller tube and against the deflector. Tighten the screws.
11. *(Detail A)* Inside each end cap, screw in the #10 x 3/8 thread-cutter screw and fender washer as shown.
12. *(Detail D)* If the slat is installed, confirm the material is centered in the slat, then align one end plate and attach to the slat using the #8 x 2 flat head screw. DO NOT OVER TIGHTEN, maximum torque 16 in-lbs.
NOTE: The attaching screws are offset from the center of the polyrods. Ensure that the polyrod is positioned in the large diameter of the fabric slot. The screws thread into the extrusion and the top of the polyrod.
Tip: Place a small wedge (such as a small flat blade screwdriver) between the top of the fabric and the slot to hold the polyrod down to start the screw in the correct position. Use care to not damage the fabric.
13. After tightening the fabric in the slot from one end of the slat to the other end, trim any excess polyrod that extends past the slat. Align the second end plate and attach to the slat using two (2) #8 x 2 flat head screws. DO NOT OVER TIGHTEN, maximum torque 16 in-lbs.



CAUTION

When the pins are removed, the roller tube springs will quickly roll up any slack material. Use care that hands and fingers are out of the way.

14. *(Detail A)* Remove the spring locking pin from the end of the roller tube assembly. The XL roller tube has two springs. Remove the pins from both ends of the XL roller tube.
15. Close the cover. Refer to "The Front Cover" on page 3.

SPRING/ROLL BAR REPLACEMENT

CAUTION These procedures deal directly with the pre-wound spring tension in the roller tube. Failure to exercise care and/or failure to follow the instructions can result in personal injury and/or property damage. If the spring is prematurely released, the roller tube can spin out of control and cause personal injury and/or property damage.

NOTES:

1. Replacement roller tube assemblies are complete and include the spindles and pre-wound spring assembly.
2. The instructions in this section are for replacing only the roller tube assembly or spring assembly.
3. If replacing the fabric and roller tube assembly, follow the "Canopy Replacement" instructions on page 4. Substitute the replacement roller tube for the existing roller tube.
4. If replacing the fabric and spring assembly, follow the "Canopy Replacement" instructions on page 4. Repair the roller tube assembly following the instructions for "Replacing the Spring Assembly" on page 7 before installing the new fabric.
5. The XL roller tube assembly is shipped in two pieces. The center splice is pre assembled in the RH half of the roller tube. Refer to the instructions on page 8 before continuing.

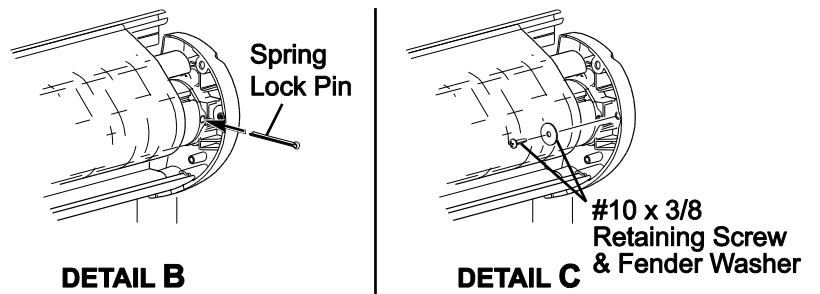
REMOVING THE ROLLER TUBE ASSEMBLY

If not replacing the fabric, it is not necessary to remove the fabric from the coach. The fabric can hang down on the side of the coach.

1. Open the room approximately 3"-4".
2. Open the front cover. Refer to page 3.

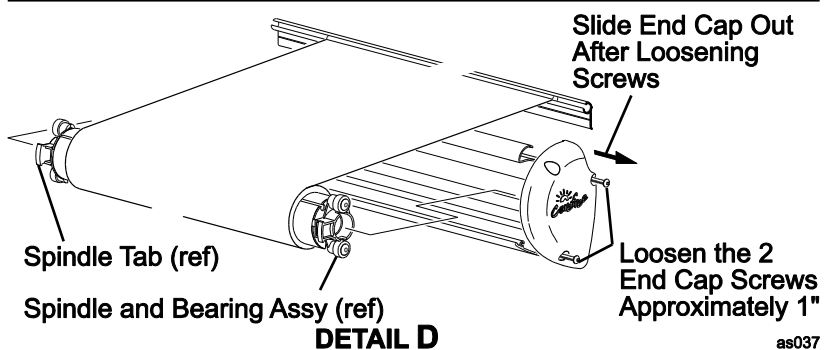
CAUTION The springs are wound and under tension. The spring locking pins must be inserted before continuing otherwise the roller tube can spin out of control and cause personal injury and/or property damage.

3. (Detail B) On the right end of the roller tube, insert a spring locking pin through the bearing and spindle; it may be necessary to twist the roller to align the holes. The locking pin is a 3/16 x 1 1/4 cotter pin or equivalent. Place tape over the head of the pin to avoid the pin coming out.



IMPORTANT NOTE: The XL model has two springs. A second spring locking pin must also be inserted through the LH spindle and taped in place before continuing.

4. (Detail C) Inside the end caps, remove the spindle tab retaining screws and washers. There is one screw in each end cap.
5. On the right end of the deflector, loosen the screws for the end cap approximately 1" and slide the end cap out.



6. Lift the roller tube out of the deflector.
7. Clearly mark the right end of the roller tube for reference then unroll the fabric from the roller tube.
8. Remove the fabric retaining screws from the roller tube spindles and save.
9. Slide the roller tube off the fabric.

If replacing the roller tube assembly, go to "Installing the Roller Tube Assembly" on page 9.

If replacing the spring assembly, go to "Replacing the Spring Assembly" on page 7.

REPLACING THE SPRING ASSEMBLY

NOTE: R001877 (Ascent XL) contains both the LH and RH springs. Both springs should be replaced to ensure that the springs are the same strength on both sides of the slideout cover.

This procedure will require two people.

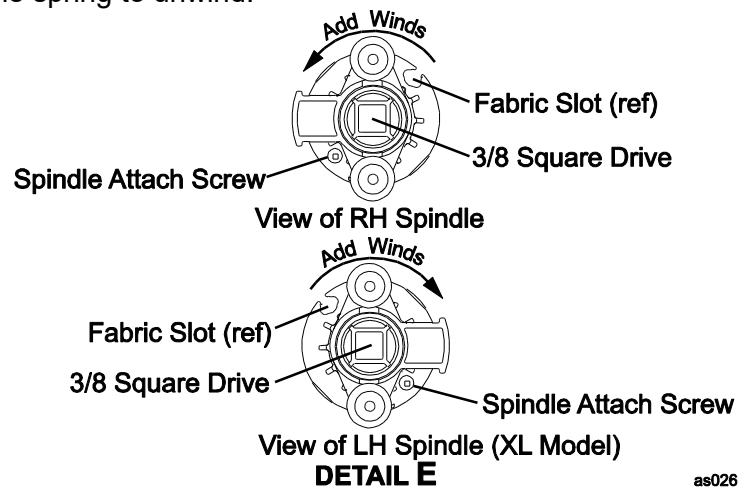
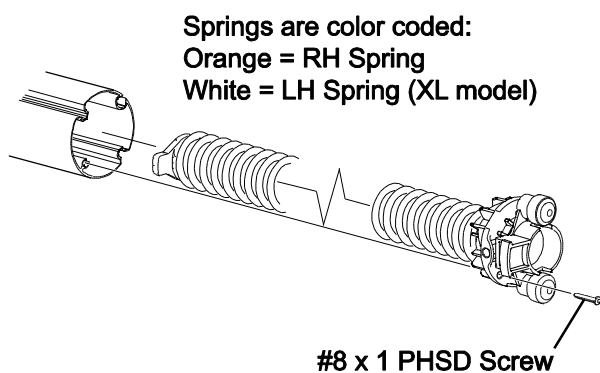
1. Remove the existing spring winds.

NOTE: Use a pair of good quality work gloves to protect the hands while holding onto the roll bar. Insulated rubber gloves provide a solid grip.

- 1.1. Firmly hold onto the roller tube.

CAUTION The spring is wound and under tension. When the pin is removed, the spindle will turn rapidly. To avoid personal injury, keep hands away from the spindle until the spring has unwound.

- 1.2. Remove the spring locking pin and allow the spring to unwind.

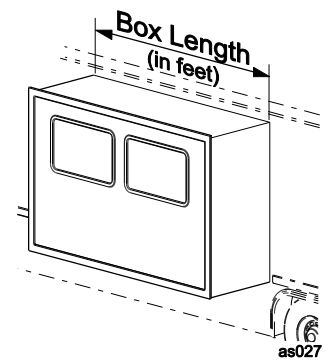


2. After the spring is unwound, remove the #8 x 1 pan head square drive screw that attaches the spindle assembly to the roller tube and save.
 3. Remove the spring assembly from the roller tube and set aside.
 4. Insert the new spring assembly and secure to the roller tube with the #8 x 1 screw removed previously.
- NOTE:** RH springs are color coded ORANGE; for XL models, the LH spring is color coded WHITE.

Calculating the Spring Winds see note 1

The Ascent spring winds are calculated based on the box length of the slideout. To calculate the spring winds (room closed), measure the box length IN FEET.

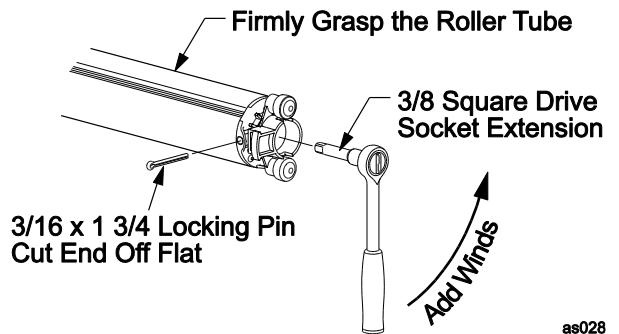
Box Length	Winds Required
Less than 6'	Spring Winds = 4
6' to 11' 11"	Spring Winds = Box Length - 1
<i>Example: Box Length = 10' 4"; spring winds = 10 - 1 = 9.</i>	
<i>Always round down to the nearest whole number.</i>	
12' to 16' 4"	Spring Winds = 11
<i>(XL Models)</i>	
16' 5" to 30'	Spring Winds = Box Length divided by 3
<i>Example: Box Length = 20' 6"; spring winds = 20 divided by 3 = 6.</i>	
<i>Always round down to the nearest whole number.</i>	
30' or longer	Spring Winds = 10



Adding Spring Winds

NOTE: Have a spring lock pin available. The pin should be a solid 3/16 x 1 1/4 shaft with a flat end such as a drill bit. If using a 3/16 cotter pin, cut the two legs flush so that the end is flat.

- Have one person firmly hold the roller tube stationary.
- Insert a 3/8 square drive extension with handle into the spindle. Turn the handle counter clockwise to add spring winds. One complete rotation of the spindle equals one spring wind.
- After adding the required number of spring winds, firmly hold the ratchet handle and roller tube and insert the spring locking pin. The pin will only go in partially until the 3/8 drive is removed.
- Hold the pin in place and slowly release the ratchet handle. When there is no pressure on the handle, remove the square drive from the spindle. Press the pin in as far as possible then place tape over the head of the pin to avoid the pin coming out.



After completing the spring replacement, go to "Installing the Roller Tube Assembly" on page 9.

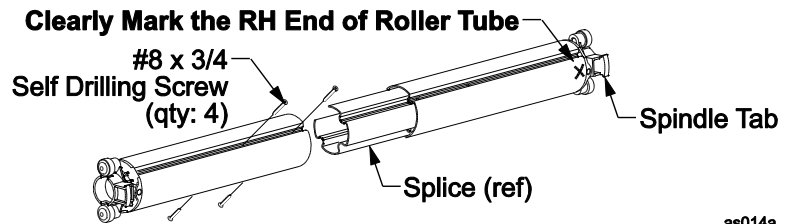
¹ Replacement springs are now made with a heavier wire (.156") and marked with Orange (RH) and White (LH) in the center of the spring. Use the spring winds listed above. If using or reusing an older spring marked with Green (RH) or RED (LH) the spring winds are:

Box Length	Winds Required
Less than 5'	Spring Winds = 4
5' to 16' 4"	Spring Winds = Box Length
<i>Example: Box Length = 10' 4"; spring winds = 10. Always round down to the nearest whole number.</i>	
<i>(XL Models)</i>	
16' 5" to 29' 11"	Spring Winds = Box Length divided by 2
<i>Example: Box Length = 20' 6"; spring winds = 20 divided by 2 = 10. Always round down to the nearest whole number.</i>	
30' or longer	Spring Winds = 17

ASSEMBLING THE XL ROLLER TUBE ASSEMBLY

The XL roller tube assembly is shipped in two pieces. The center splice is pre assembled in the RH half of the roller tube. It is necessary to assembly the XL roller tube before continuing.

1. Clearly mark the RH roller tube next to the bearing and spindle.
2. On the ground, press the two roller tube halves tightly together. The splice can only fit one way in the tube. For reference, the spindle tabs on the roller tube must both point in the same direction.
3. Attach the left tube half to the splice using four (4) #8 x 3/4 self-drilling screws. Match the screw pattern in the right roller tube half.



as014a

INSTALLING THE ROLLER TUBE ASSEMBLY

If the new fabric is being installed with the replacement or modified roller tube, use the installation instructions for "Installing the Fabric and Roller Tube" on page 5.

For the reference details, refer to on page 3 **Error! Bookmark not defined..**

If the fabric was left on the coach:

1. Slide the roller tube onto the fabric. Make sure that the right end (spring end) of the roller tube is on the RH side of the canopy.
2. (*Detail C*) After the fabric is centered, hold the polycord in the bottom of the fabric slot. Place one (1) #10 x 2 PHSD screw through the fabric slot hole and polycord. The screw must be positioned to thread into the metal of the roller tube slot and the edge of the polycord. The screw action will pull the polycord further into the slot hole. DO NOT OVERTIGHTEN, maximum torque 16 in-lbs.

NOTE: The attaching screws are offset from the center of the polyrods. Ensure that the polyrod is positioned in the large diameter of the fabric slot. The screws thread into the extrusion and the top of the polyrod.

Tip: Place a small wedge (such as a small flat blade screwdriver) between the top of the fabric and the slot to hold the polyrod down to start the screw in the correct position. Use care to not damage the fabric.

3. After tightening the fabric in the slot from one end of the roller tube to the other end, repeat step 2 to secure the fabric.
4. Roll the fabric onto the roller tube. Note the direction of the wrap as shown in Detail C. The view is of the RH spindle that was marked earlier.
5. Insert the roller tube into the fixed end cap. Note the orientation of the spindle tabs at the ends of the roller tube; these must point forward (away from coach).
6. Align the RH spindle of the roller tube then push the loose end cap onto the roller tube and against the deflector. Tighten the screws.
7. (*Detail B*) Inside each end cap, screw in the #10 x 3/8 screw and fender washer as shown.



CAUTION

When the pins are removed, the roller tube springs will quickly roll up any slack material. Use care that hands and fingers are out of the way.

8. (*Detail A*) Remove the spring locking pin from the end of the roller tube assembly. The XL roller tube has two springs. Remove the pins from both ends of the XL roller tube.
9. Close the cover and secure using two (2) #8 x 1 1/2 socket head cap screws. (Refer to "The Front Cover" on page 3).

NOTE: There will be a small gap between the cover and end cap. DO NOT attempt to close the cap by over tightening the screw, maximum torque is 30 in-lbs.

STANDARD MAINTENANCE

Maintaining a Carefree Ascent slide-out cover is easy. Just follow these basic steps:

- Periodically check that the fasteners are tight. Tighten if necessary.
- Keep the awning fabric clean.

FABRIC CARE

NOTICE Do not use oil based cleaners or any caustic, granulated, or abrasive type cleaners on your Carefree product.

1. One of the best ways to keep the fabric looking good and to delay the need for deep or vigorous cleanings is to hose fabrics off on a monthly basis with clear water. This practice will help prevent dirt from becoming deeply imbedded in the fabric. In most environments, a thorough cleaning will be needed every two to three years.
2. When it's time for a thorough cleaning, the fabric can be cleaned while still on the awning frame.
 - For Vinyl Fabric – Use a soft brush and warm water with soap.
 - For Acrylic Fabric – Use a stiff brush and warm water with soap.
3. When cleaning the fabric, it is important to observe the following:
 - Always use a natural soap, never detergent.
 - Water should be cold to lukewarm, never more than 100°F.
 - Air-dry only. Never apply heat to the fabric.
 - Always allow the fabric to dry thoroughly before rolling up the canopy.

Mildew

Mildew is a fungus growth that looks like dirt. Vinyl coated polyester fabrics are mildew resistant because of a chemical biocide in the vinyl coating. Under ordinary conditions, mildew will not appear. However, in areas where high temperature and humidity are common, mildew can be a problem and required the material to be washed more frequently. Thoroughly rinse the fabric with clean water and allow to air dry completely before rolling up the canopy.

Pooling

When water collects on the top of the fabric, this is known as "pooling". This can occur during inclement weather or if a running air conditioner discharges over the awning. The water is dumped when the awning is retracted. It is recommended that if water accumulates on the top; retract the room in steps (8"-12") to dump the water. This will help prevent the fabric from stretching or distorting.

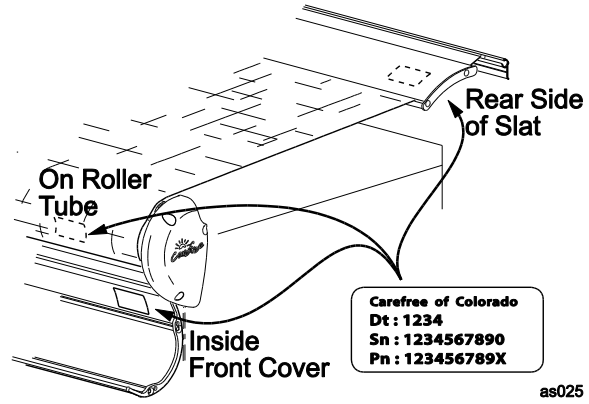
IMPORTANT NOTE: If the room must be closed during wet weather (rain), close the room in increments (approximately 6-8"). This is to allow water to run off while the room is closing and prevent sudden pooling.

HARDWARE MAINTENANCE

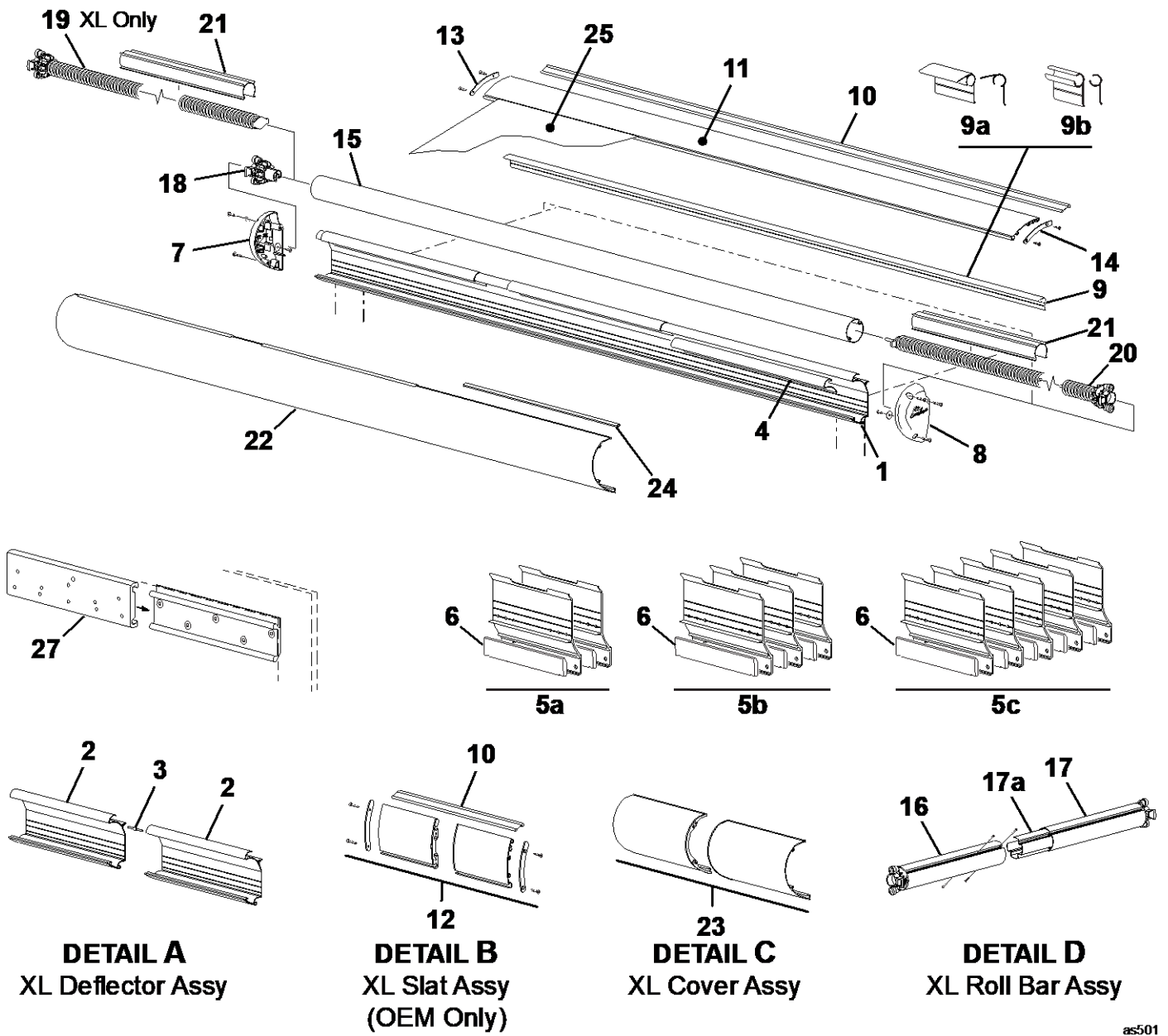
- Replace any parts that become damaged.
- Periodically check all mounting hardware, screws, lags, etc., and re-tighten when necessary.

PART NUMBER LISTING

PART NUMBER/SERIAL NUMBER LOCATION



ILLUSTRATED PARTS LIST



as501

Item	Part Number	Description		Notes
1	R001564XXX-xxx	Deflector	Standard	
2	R001565XXX-xxx	Deflector, Half	XL Only	
3	R001555	Spacer, Shoulder	XL Only	
4	R001563	Deflector Glide, 24"	pkg of 1	
5a	KY5551-A	Bracket Kit, 2 Brackets, Deflector Mount	White	7
	KY5561-A	Bracket Kit, 2 Brackets, Deflector Mount	Black	7
5b	KY5552-A	Bracket Kit, 3 Brackets, Deflector Mount	White	7
	KY5562-A	Bracket Kit, 3 Brackets, Deflector Mount	Black	7
5c	KY5553-A	Bracket Kit, 5 Brackets, Deflector Mount	White	7
	KY5563-A	Bracket Kit, 5 Brackets, Deflector Mount	Black	7
5d	R001711	Mounting Shim, 7.5" x 1" x 3/16" (not shown)	pkg of 1	
6	R001151XXX	Cover, Mounting Bracket		
7	R001554WHT	End Cap, LH	White	
	R001554BLK	End Cap, LH	Black	
8	R001556WHT	End Cap, RH	White	
	R001556BLK	End Cap, RH	Black	
9a	610701xxxX	Awning Rail, Hooded, used w/ slat		
9b	610700xxxXXX	Awning Rail, Standard, used when slat not installed		
10	R001248XXX-xxx	Flex Connect		
11	R001566XXX-xxx	Weather Slat	Standard	6,8
12	R001567XXX-xxx	Weather Slat	XL Only	2,6,8
13	R001553WHT	End Plate, Slat, LH	White	6
	R001553BLK	End Plate, Slat, LH	Black	6
14	R001558WHT	End Plate, Slat, RH	White	6
	R001558BLK	End Plate, Slat, RH	Black	6
15	R001568-xxx	Roller Tube Assy	Standard	3
16	R001569-xxx	Roller Tube Half, LH	XL	4
17	R001572-xxx	Roller Tube Half, RH	XL	5
17a	R038303-008	Splice		
18	R001559	Spindle and Bearing Assy, LH	Standard	
19	R001877	Spring Assy Kit	XL Only	9
20	R001560	Spring Assy, RH (identified with orange marking)		
21	R041481-001	Spring Sleeve, used with single slot roller tube		
22	R001570XXX-xxx	Cover Assy	Standard	
23a	R001571XXX-xxx	Cover Assy, 2 piece	XL Only	2
23b	R038289XXX-xxx	Cover Assy, 1 piece	XL Only	
24	R001562	Bumper, Front Cover	pkg of 4 (24")	
25		Canopy Only	Refer to Canopy Order Form	
26	R012739-001	Hardware Pack, Standard	Not Shown	
	R012749-001	Hardware Pack, XL	Not Shown	
27	BX0013-2-WHT	Carefree Slide Topper Prepped Access Plate Adapter Kit	pkg of 2	
	BX0013-2-BLK	Carefree Slide Topper Prepped Access Plate Adapter Kit	pkg of 2	

- Notes:
1. XXX = Color; xxx = Length in inches
 2. Ascent XL components (items 12, 23a) are shipped in two pieces and must be assembled during installation.
 3. Roller tube assy (item 15) is complete and includes roller tube, LH spindle assy (item 18) and pre-wound RH spring assy (item 20).
 4. XL LH roller tube assy (item 16) is complete and includes roller tube half, screws and pre-wound LH spring assy
 5. XL RH roller tube assy (item 17) is complete and includes roller tube half, splice, screws and pre-wound RH spring assy.
 6. The slat option is offered for select OEM installations and is not available for aftermarket installations. Includes items 10, 13, 14.
 7. Bracket kits (items 5) are based on order length. Item 5a used with awnings 112" or less; item 5b used with awnings 118" – 196"; item 5c used with XL awnings 202" and longer.
 8. Slat (item 11, 12) comes with flex connect (item 10) and end plates (items 13, 14).
 9. Spring assy kit (item 19) contains both the LH spring (marked white) and the RH spring (marked orange). Both springs should be replaced to ensure that the springs are the same strength on both sides of the slideout cover.